

315/25-kV **Patriotes** substation and 315-kV supply line

INFORMATION ON SOLUTION SELECTED • SEPTEMBER 2017

Hydro-Québec plans to build a 315/25-kilovolt (kV) substation and a 315-kV supply line in Saint-Eustache to meet the growing needs of Saint-Eustache, Deux-Montagnes and Sainte-Marthe-sur-le-Lac. La Trappe substation (in Oka) and Saint-Eustache substation, which currently supply the area, no longer provide the capacity and reliability required to support the urban development.


Enlightening consultations

After conducting technical and environmental studies, Hydro-Québec developed two line route variants (A and B) and two possible sites for the substation, which were presented to the local community to gather any concerns. Consultation activities were held with local organizations, affected landowners and residents living near the route variants. Through these exchanges, Hydro-Québec gained a better understanding of issues related to urban development, landscape, agricultural vitality, agritourism and other local realities.

Route B was the more favourably received variant, and it was subsequently modified by Hydro-Québec to minimize the final project's impact on the community.

A major project for the region

- Meets the region's growing demand for electricity
- Supports local development



Visual simulation
of Patriotes substation
(before planned planting)

SUBSTATION

Selected site

Hydro-Québec plans to build the new Patriotes substation on Boulevard Albert-Mondou, in Saint-Eustache's industrial area, an environment compatible with this type of equipment. The selected site is located near the ADESA Montreal corporation premises and south of the right-of-way for the Réseau de transport métropolitain (RTM) railway.

Initially, the substation will be equipped with three transformers that will lower the voltage from 315 to 25 kV and supply 19 25-kV distribution feeder bays. As demand grows, another transformer could be added to supply a total of 28 distribution feeder bays.

Plantings and an architectural fence are planned in front of the substation to help integrate the facility into its environment.

SUPPLY LINE

Optimization of route B

Hydro-Québec conducted studies to optimize route B in response to the concerns expressed by the community during the consultation phase. A number of improvements were made to the initial route.

To replace an existing tower rather than add one, Hydro-Québec moved the connection point for variant B west of the Saint-Eustache racetrack. This change also reduces the clearing of deciduous forest by 50% compared to the initial route B.

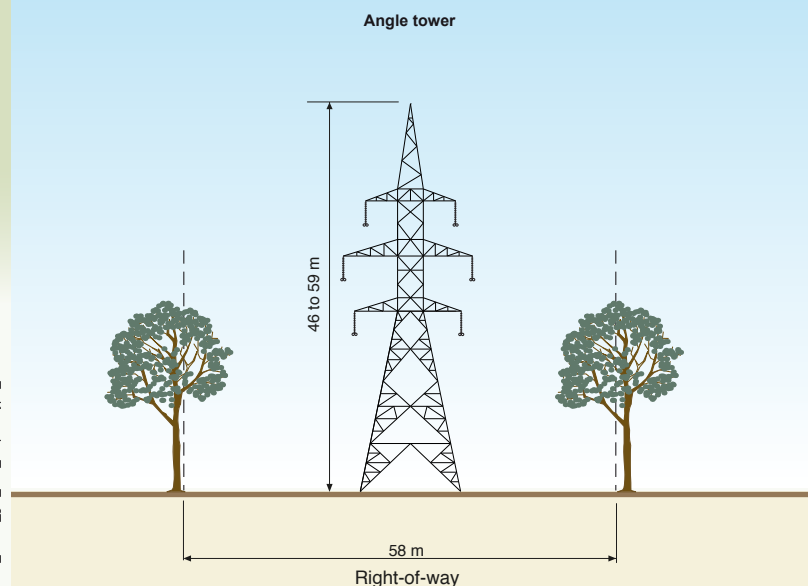
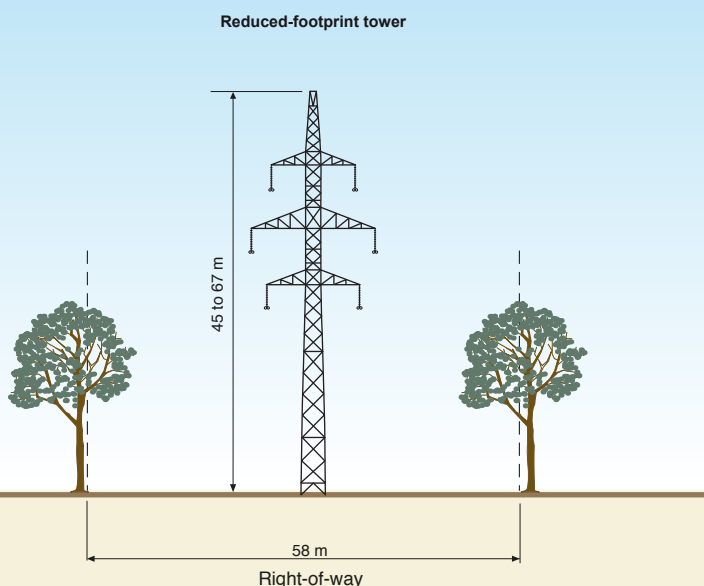
Hydro-Québec will be purchasing two properties on Boulevard Arthur-Sauvé and Chemin de la Rivière Nord to keep the future line far from neighboring homes and ensure that the route is as linear as possible. An increased proportion of reduced-footprint towers will be used so that the line will better integrate into the landscape.

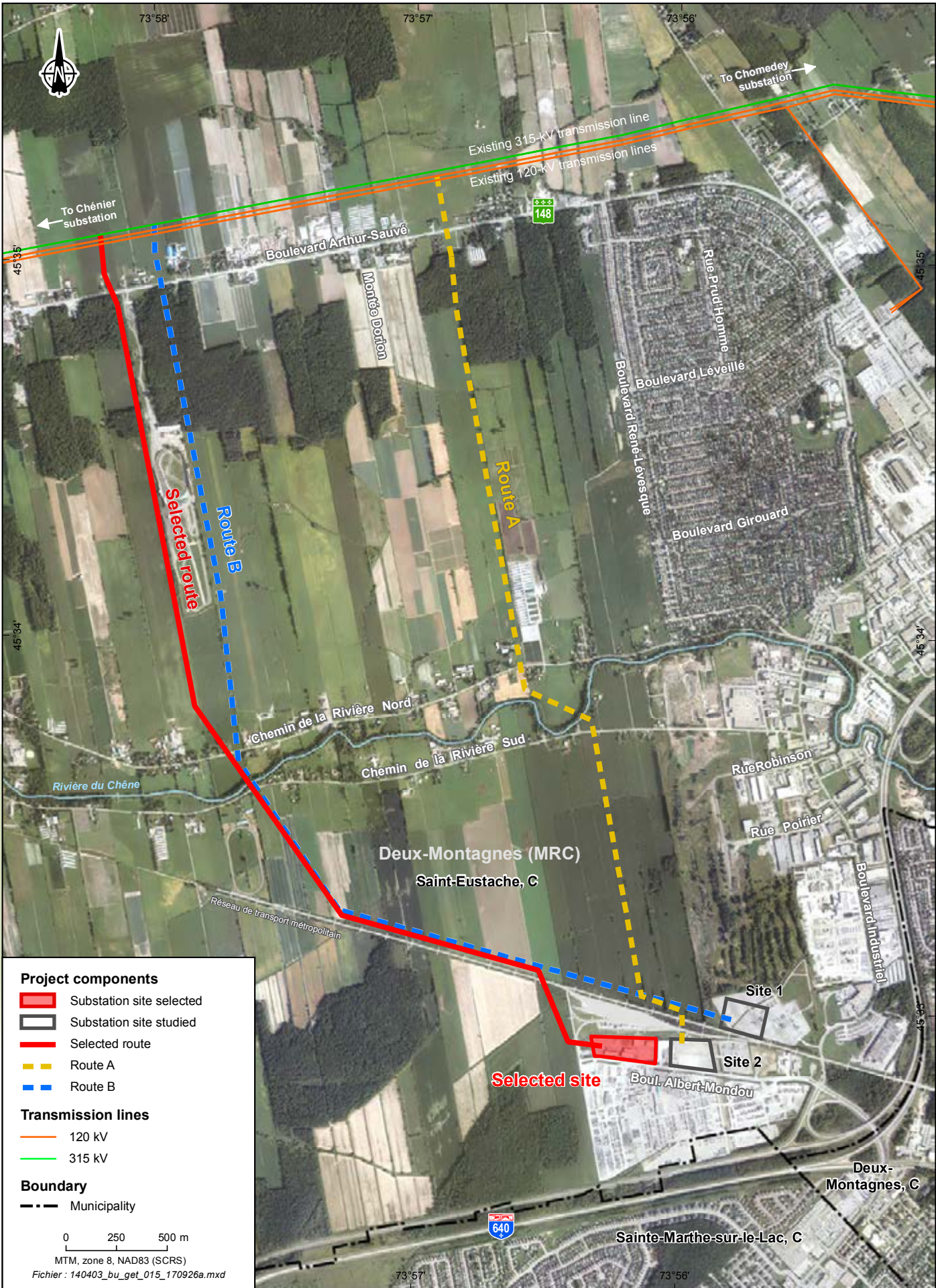
Improvements to the alignment and distribution of towers will be made to help reduce the visual impact of the line for residents living on the roads that run along the Rivière du Chêne. In addition, selective clearing will be carried out in the ecological corridor of the Rivière du Chêne to preserve as much vegetation as possible.

Selected route

The selected route is 5-km long and located entirely within the boundaries of Saint-Eustache's agricultural zone. It runs along the west side of the Saint-Eustache racetrack for over 1 km and through large-scale crop fields for 4.1 km. It crosses a maple stand for 270 m and another forest for 210 m.

Tower types and right-of-way widths





Support for community development

Hydro-Québec uses its projects as an opportunity to participate in the development of host communities. At the start of construction, the company grants eligible organizations funding equivalent to 1% of the initially authorized value of the facilities covered by the Integrated Enhancement Program. This funding is put toward local enhancement initiatives that improve the community.



Project schedule

DRAFT DESIGN

Public participation process	Fall 2015 – summer 2017
------------------------------	-------------------------

PROJECT

Filing of environmental impact statement	Fall 2017
Permitting	Fall 2017 – winter 2018-2019
Substation construction	Spring 2019 – summer 2020
Line construction	Fall 2019 – summer 2020
Commissioning	Summer 2020

hydroquebec.com/despatriotes

For more information
INFO-PROJECT line
1 800 465-1521, ext. 6022

ISABELLE NUCKLE

Advisor – Communications and Communities – Lanaudière,
Laurentides, Laval and Outaouais
Direction – Affaires régionales et collectivités
333, boul. Jean-Paul Hogue, Saint-Jérôme (Qc)
J7Z 6Y3
E-mail: nuckle.isabelle@hydro.qc.ca

Ce document est également publié en français.
This is a translation of the original French text.
2017E1958-A