

# 315/25-kV **Viger-2** Substation

PUBLIC CONSULTATION • NOVEMBER 2017

## Current situation

Due to the sharp rise in electricity demand, Montréal's 120-kilovolt (kV) system will reach its maximum capacity within the next few years. In the downtown area, Adélar-Godbout and Central-2 substations supply many areas undergoing development, including Griffintown, the port area south of the Canal de Lachine, and Cité-du-Havre.

At present, the 120-kV system's operational leeway is being used to meet demand during the summer period. Within a few years, the rise in demand will practically eliminate this leeway.

In addition, the new Réseau électrique métropolitain (REM) will provide a light rail link from the south shore to downtown Montréal, requiring electricity supply between Pont Champlain and Gare Centrale, an area currently served by the abovementioned substations.





## Recommended solution

Between 2012 and 2014, studies were carried out to assess the future needs of the downtown area, particularly the area supplied by 120/25-kV Adélar-Godbout substation and 120/12-kV Central-2 substation. Based on the conclusions of these studies, Hydro-Québec would be able to meet demand growth by adding a new 315/25-kV substation near Viger substation.

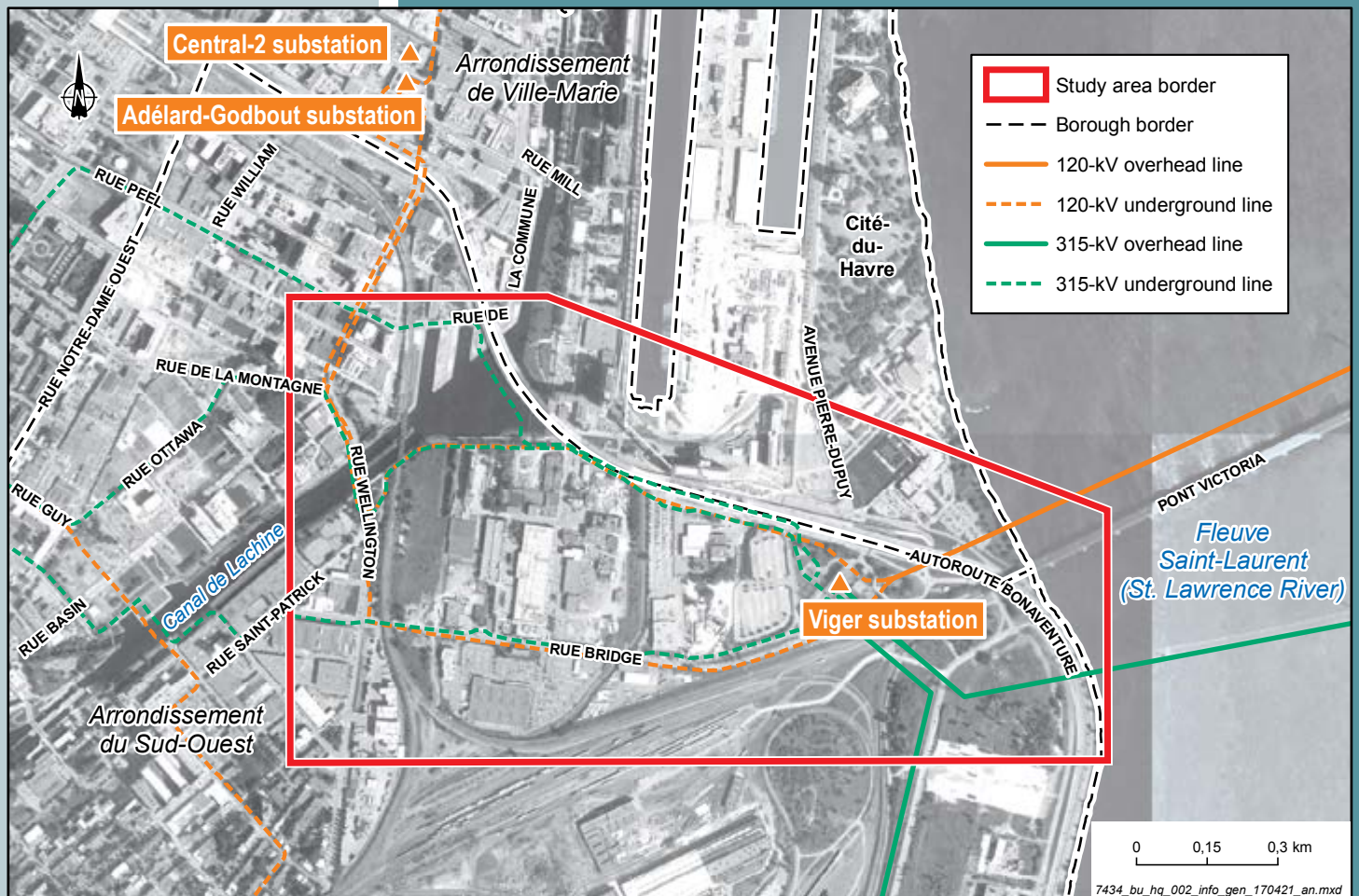
The Viger-2 substation project is part of the company's plan to modernize the transmission system on the island of Montréal by creating a 315/25-kV enhanced architecture to replace or complement 120/12-kV and 120/25-kV facilities.

The deployment of the plan, which has included work on Bélanger, Bout-de-l'Île, Bourassa, Fleury, De Lorimier, Saint-Patrick and, more recently, Saint-Jean substations, is continuing with the construction of Viger-2 substation.

Hydro-Québec will conduct draft-design studies for the construction of the substation.

## Study area

The project study area covers roughly 2.5 km<sup>2</sup> and includes parts of the Sud-Ouest and Ville-Marie boroughs. It is bordered by the Fleuve Saint-Laurent to the east, Rue Bridge and railway tracks to the south, Rue Wellington to the west and Rue de la Commune to the north.





## Environmental considerations

In light of current knowledge, the main technical and environmental considerations related to the construction of the substation are the following:

- Substation located in an urban area and, specifically, along one of the main entrances to the city of Montréal
- Presence of a memorial to the Irish who died of typhus (1847–1848)
- Integration of the substation in an area likely to undergo major changes
- Potential presence of archaeological remains
- Potential presence of contaminated soil

In summer 2017, Hydro-Québec acquired the Lafarge lot and the property where the current Loto-Québec parking lot is located. The proximity of Viger substation will make it easier to supply the new substation.

Over the past few months, Hydro-Québec carried out detailed environmental inventories and technical surveys in the study area to better understand the host environment of the planned substation. Substation configuration variants will be subject to a comparative analysis based on applicable environmental, technical and economic criteria. These variants will also take into account the community's concerns. The detailed comparison will be used to determine the solution with the least impact.



## Public participation

A favorable reception from local communities is one of the three essential conditions for Hydro-Québec projects. The company develops each new project with a view to striking a balance between the three pillars of sustainable development: environmental, social and economic aspects.

As a result, Hydro-Québec has implemented a public participation and consultation process. The company will thus be able to take into account the concerns of the community and its representatives so as to best adapt the project to local realities.

Hydro-Québec will also be partnering with the city of Montréal and Montréal's Irish community to form a working committee in charge of creating a site to commemorate the Irish who died of typhus.

## Project schedule

### DRAFT-DESIGN

Public consultation	Fall 2017 – Winter 2018
Information on the solution selected	Winter 2018

### PROJECT

Filing of environmental impact statement	Summer 2018
Permitting	Spring 2020
Construction	Summer 2020 – spring 2023
Commissioning	Spring 2023

[hydro.quebec/viger-2](http://hydro.quebec/viger-2)

## For more information

### INFO-PROJECT LINE

514 385-8888, extension 3462

### JOHANNE SAVARD

Advisor – Communication and Communities – Montréal  
Direction – Affaires régionales et collectivités  
201, rue Jarry Ouest, 1<sup>er</sup> étage  
Montréal (Québec) H2P 1S7  
[savard.johanne.2@hydro.qc.ca](mailto:savard.johanne.2@hydro.qc.ca)

This is a translation of the original French text.  
Ce document est également publié en français.  
2017E2544-A