

120/25-kV **Thurso-Papineau** Substation and 120-kV Supply Line

INFORMATION ON THE SOLUTION SELECTED • FALL 2017

A new transformer substation to support local development

The equipment at Thurso substation is showing signs of age and needs to be replaced. To respond to this need and support the development under way in the region, Hydro-Québec plans to build a new 120/25-kilovolt (kV) substation to replace the existing Thurso substation.

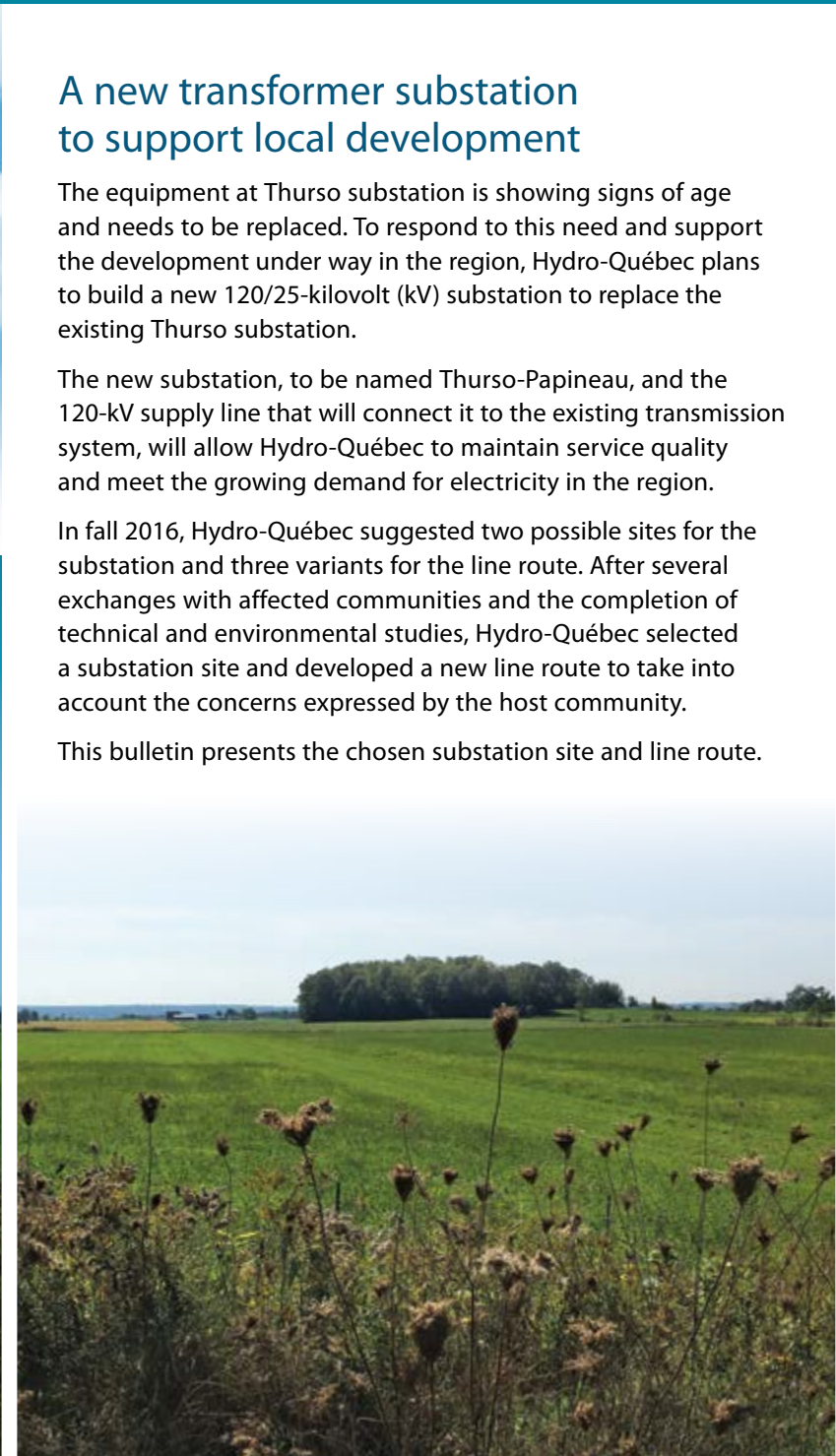
The new substation, to be named Thurso-Papineau, and the 120-kV supply line that will connect it to the existing transmission system, will allow Hydro-Québec to maintain service quality and meet the growing demand for electricity in the region.

In fall 2016, Hydro-Québec suggested two possible sites for the substation and three variants for the line route. After several exchanges with affected communities and the completion of technical and environmental studies, Hydro-Québec selected a substation site and developed a new line route to take into account the concerns expressed by the host community.

This bulletin presents the chosen substation site and line route.

A MAJOR PROJECT FOR THE REGION

- Improves the quality of electricity service
- Significant investment in the region
- Supports local development



SUBSTATION

Site selected

Hydro-Québec plans to build Thurso-Papineau substation west of Rue Galipeau, on a property owned by Fortress Cellulose Spécialisée. The site is currently occupied by a poplar plantation. To promote the integration of the substation into the surrounding environment, a strip of vegetation will be kept or planted to act as a visual screen.

Characteristics of the planned substation

The substation will cover an area of approximately 70 by 90 m. It will include two transformers that will lower the voltage from 120 to 25 kV and supply five 25-kV distribution feeder bays. A separate entrance on Rue Galipeau will be built for accessing the substation.

120/25-kV Thurso-Papineau Substation and 120-kV Supply Line

LINE

Route selected

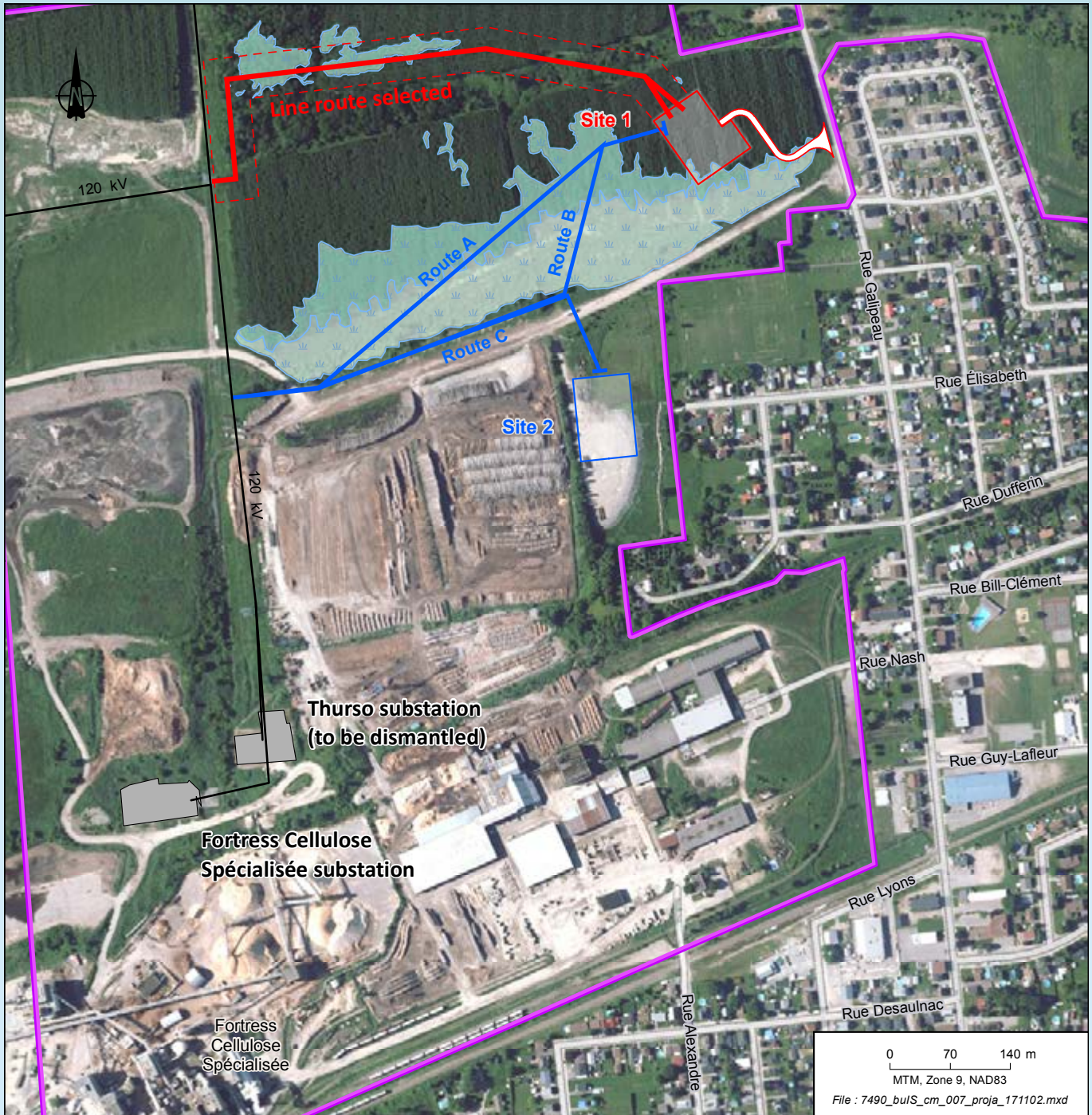
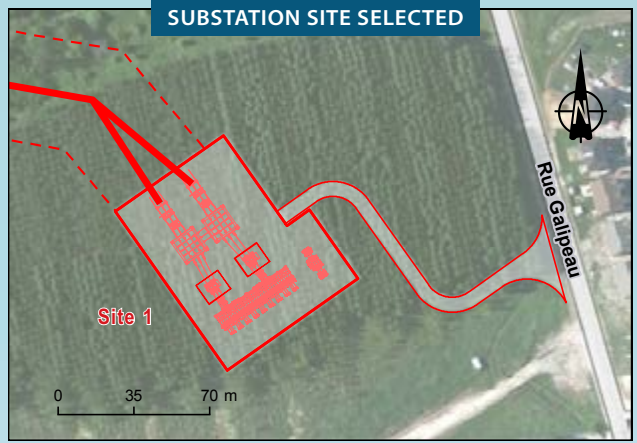
At the community's request, the line will run further north than the initially suggested variants. It will then continue parallel to an existing line for about 100 m before connecting to it.

Technical characteristics of the planned line

The planned supply line will be about 700-m long. This new double-circuit line will connect Thurso-Papineau substation to the existing transmission system. It will be supported by steel lattice towers and will require an approximately 40-m wide right-of-way.

Wetlands		Project components	
	Tree marsh		Line route selected
	Marsh		Line route studied
Boundary			Planned right-of-way
	Industrial area		Substation site selected
Substations and transmission lines			Access road
	120-kV line		
	Substation		

File : 7490_bulS_cm_007_proj_legendea_171102.mxd



Results of the public participation process

A favorable reception from local communities is one of the three essential conditions for Hydro-Québec projects. When developing each new project, the company seeks to balance the impacts associated with the three pillars of sustainable development: social, environmental and economic.

In fall 2016, Hydro-Québec consulted the various groups affected by the project: elected representatives, land-use planners, members of the business community and local residents.

The company must now obtain the government approvals required to carry out the project. Following this step, details on the construction work will be provided to the various groups affected by the project.

Project schedule

DRAFT DESIGN

Studies and public participation process	Spring 2016 – fall 2017
--	-------------------------

PROJECT

Permitting	Winter 2017-2018 and winter 2018-2019
------------	---------------------------------------

Construction	Spring 2019 – spring 2020
--------------	---------------------------

Commissioning	Summer 2020
---------------	-------------

Tangible support for community development

Hydro-Québec uses its projects as an opportunity to participate in the development of host communities. With this in mind, it grants eligible organizations funding equivalent to 1% of the initially authorized value of the facilities covered by the Integrated Enhancement Program. This funding is put toward local enhancement initiatives that improve the community.

hydro.quebec/thurso-papineau

For more information

INFO-PROJECT LINE

1 800 465-1521, ext. 6022

SARAH-ANN LANDRY

Advisor – Community Relations – Lanaudière, Laurentides, Laval and Outaouais

Direction – Affaires régionales et collectivités
333, boul. Jean-Paul-Hogue, 1^{er} étage
Saint-Jérôme (Québec) J7Z 6Y3

E-mail: landry.sarah-ann@hydro.qc.ca

Ce document est également publié en français.
This is a translation of the original French text.
2017E2249-A