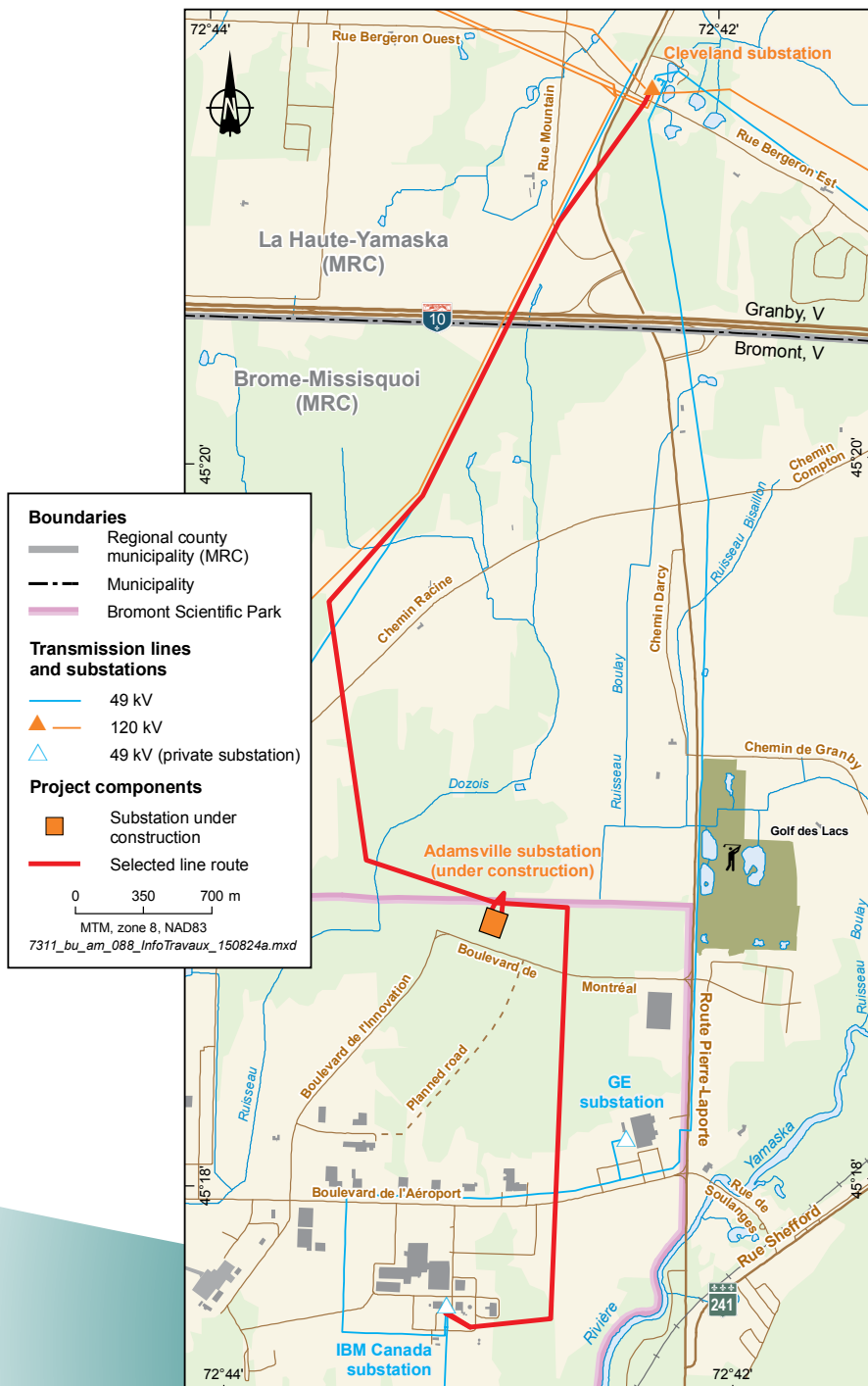


# 120/25-kV **Adamsville** Substation and 120-kV Supply Line

PROJECT NEWS • AUTUMN 2015



## Project overview

In May 2015, Hydro-Québec began construction of a new 120/25-kV\* substation on Boulevard de Montréal in Bromont. The substation will be connected to Cleveland substation, in Granby, by a new 120-kV double-circuit line that will be 8.3 km long. These additions to Hydro-Québec's transmission network are intended to meet the region's growing demands for electricity.

After the line and substation are commissioned, the current Bromont substation, located on Rue de Gaspé, can be dismantled along with the 49-kV and 25-kV equipment at Cleveland substation.

Several overhead and underground additions and modifications will be made to the distribution system to serve the region's customers.

## Schedule

Construction of substation	May 2015 to October 2016
Clearing of right-of-way	October to December 2015
Construction of line	November 2015 to October 2016
Commissioning of substation and line	October 2016
Dismantling of 49-kV lines	2016-2017
Dismantling of Bromont substation and certain sections of Cleveland substation	2017

\* kV = kilovolt (1,000 volts).

## Environmental monitoring and mitigation measures

During the work, a Hydro-Québec representative will be on site to ensure that the work is carried out in accordance with the company's commitments to environmental protection. They will also ensure the quality of the site restoration work once the project is complete.

Numerous mitigation measures are planned in connection with the work:

- work methods adopted to operations in wetlands
- clearing performed after the nesting period of forest birds and bats
- work performed primarily during winter to reduce the impacts on natural habitats

## Tangible support for community development

Hydro-Québec makes sure that its projects are an opportunity to participate in the development of the host communities through its Integrated Enhancement Program (IEP). Hydro-Québec will grant eligible organizations funding equivalent to 1% of the initially authorized value of the new facilities covered by the IEP to carry out initiatives.

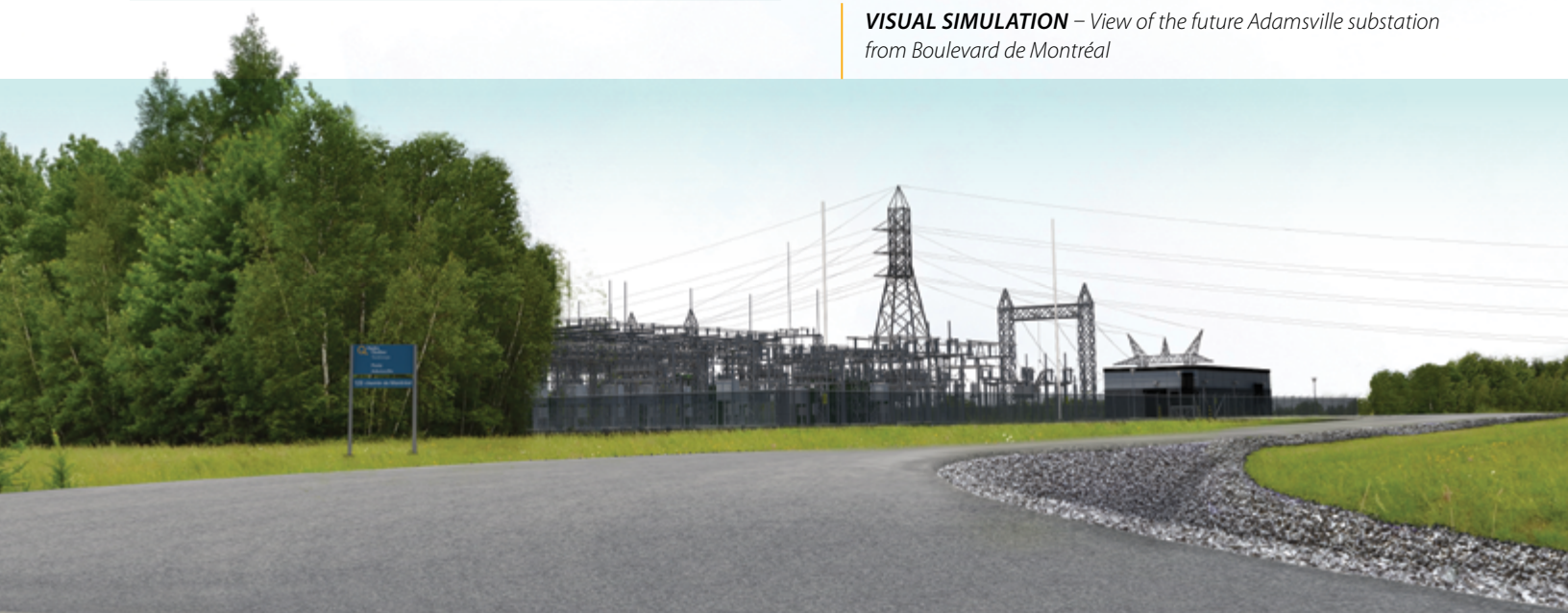
## For more information

**INFO-PROJECT** Line  
1 877 653-1139

### GENEVIÈVE DUFORT

Advisor – Community Relations – Richelieu  
Direction – Affaires régionales et collectivités  
705, boulevard Clairevue Ouest  
Saint-Bruno-de-Montarville (Québec) J3V 6B6  
dufort.genevieve@hydro.qc.ca

***VISUAL SIMULATION** – View of the future Adamsville substation from Boulevard de Montréal*



Consult our project Web pages for more information about the line characteristics and description of the work stages:  
[www.hydroquebec.com/transmission-construction-projects/adamsville-substation](http://www.hydroquebec.com/transmission-construction-projects/adamsville-substation)

*Ce document est également publié en français.*  
This is a translation of the original French text.