

# 120-kV Grand-Brûlé–Saint-Sauveur Supply Line

PROJECT NEWS • Summer 2017

## Start of work: clearing and line construction

Hydro-Québec will soon begin clearing and construction work for the 120-kV\* Grand-Brûlé–Saint-Sauveur supply line.

The 120-kV line will be 42.5 km long and will connect Grand-Brûlé substation, in Mont-Tremblant, to an existing 120-kV line, running between Saint-Sauveur and Sainte-Agathe-des-Monts substations.

This supply line project will help sustain the region's residential, commercial, economic and tourism development and meet its electricity needs for the next 20 years.

\* kV = kilovolt (1,000 volts)



Right-of-way for 735-kV lines in the Montcalm region. Part of the 120-kV Grand-Brûlé–Saint-Sauveur supply line will run along this right-of-way.

# PROJECT STEPS



1

## Clearing the right-of-way

The right-of-way is cleared to build the transmission line and ensure the safety of the population, workers and the power system. The type of clearing depends on the height of the trees, type of vegetation growing on the site and presence of sensitive areas.

On public land, the work is carried out by a contractor. Merchantable timber is generally sent to a local mill for processing and then used in residential construction and renovation.

On private land, the work may be carried out either by a forestry contractor or by the landowner, who is paid through a contract with Hydro-Québec. Clearing is regulated by the *Hydro-Québec-UPA Agreement on the Siting of Power Lines on Farms and in Woodlands*. Wood is cut to a length determined by landowners (4 feet minimum), and left at the edge of the right-of-way for them to pick up.



2

## Building temporary roads and trails

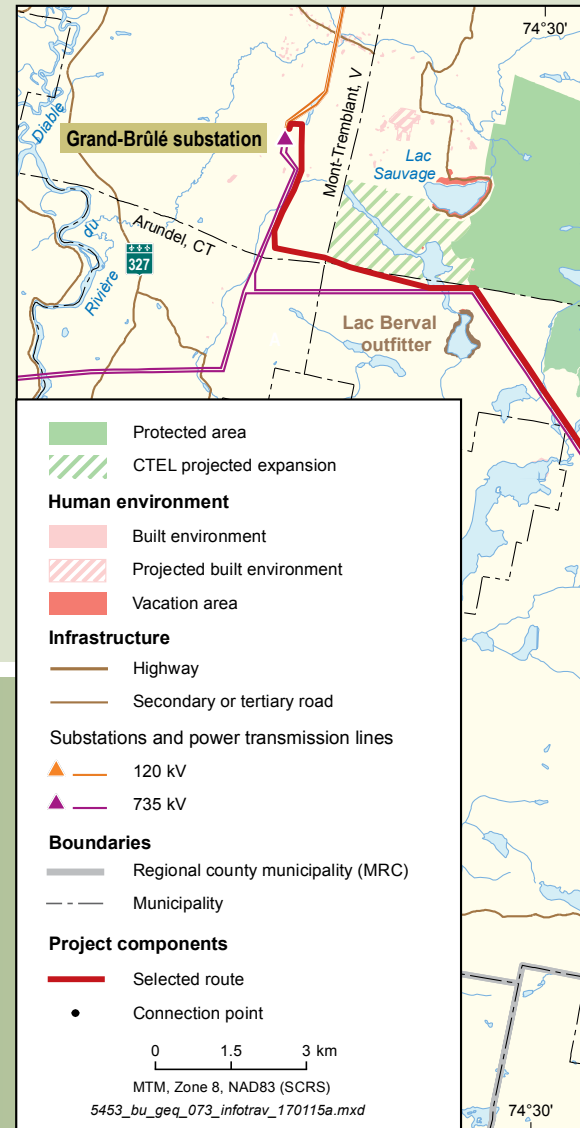
To carry out clearing and construction work, Hydro-Québec may need to improve existing roads and build temporary ones. Whenever possible, temporary roads are built in the right-of-way, while protecting sensitive elements (e.g., wetlands, water crossings, etc.). Some roads are also used for other purposes and Hydro-Québec makes every effort to promote shared and safe use. On private land, authorizations are obtained from affected landowners and agreements are reached outlining terms of use.



3

## Laying the tower foundations

This step involves excavation, filling and levelling. Foundations and methods used vary based on the type of tower, the type of soil and the depth of the bedrock.



## FOR MORE INFORMATION:

[www.hydroquebec.com/learning/transport/construction-ligne.html](http://www.hydroquebec.com/learning/transport/construction-ligne.html)





4

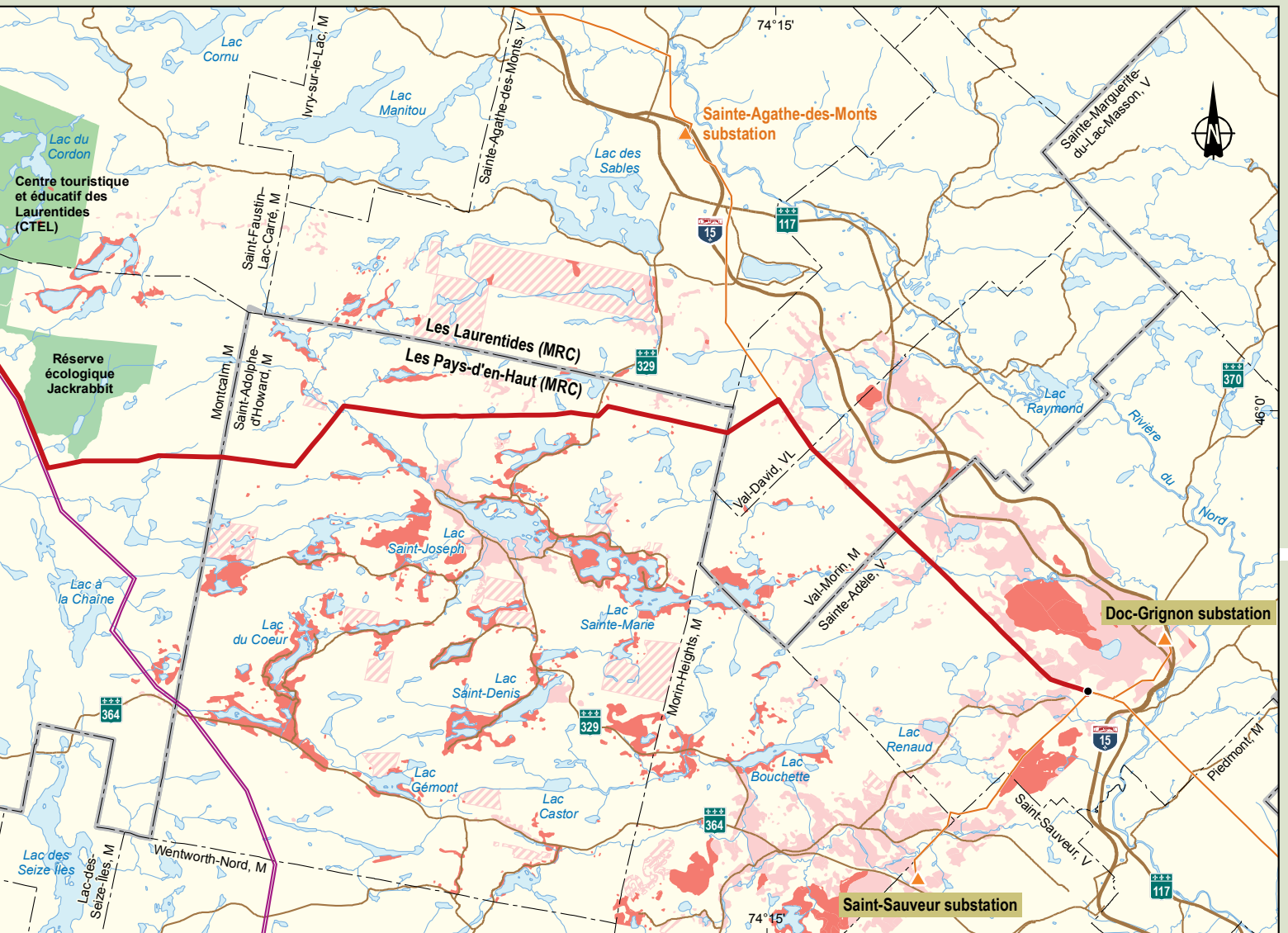
## Assembling towers, unwinding conductors and energizing the line

Building a line involves several operations: assembling towers on the ground, lifting towers upright and installing insulator strings, conductors, overhead ground wires and counterpoise wires. This work is carried out by different tradespeople.

5

## Restoring the site

This final step in the construction process includes cleaning up the worksites (debris and waste), ground levelling and reshaping, dismantling temporary access roads, filling ruts, seeding or planting based on the characteristics of the site (shoreline, wetland, etc.), restoring infrastructure (e.g., roads, bridges and culverts, fences, etc.). On private land, a tour of the site is conducted with the landowner to ensure that the restoration work meets their expectations.



## Execution of the work

Clearing and construction work will be assigned to specialized contractors selected following public calls for tenders.

## Environmental compliance at the worksite

During the construction period, a Hydro-Québec representative will be onsite to ensure that the work is carried out in compliance with commitments made to protect the environment. The representative will also ensure the quality of the site restoration work once the project is complete.

## Work schedule

Work will be carried out from Monday to Friday, between 7 a.m. and 7 p.m. Exceptionally, specific work or tasks may need to be done outside of these hours and on weekends. In such cases, municipal authorities concerned will be advised beforehand.

## Safety and sharing of trails and access roads

During the construction period, specific measures (signs, marking, separate trails, etc.) will be implemented to ensure the safety of all-terrain vehicle (ATV) and snowmobile drivers who use trails and access roads.

Hydro-Québec asks vacationers and ATV and snowmobile drivers to be particularly careful near the jobsite. Since various types of machinery will be in operation, it will be very important to remain clear of the work areas and respect all jobsite-related signage.

## Tangible support for community development

Hydro-Québec makes sure that its projects are an opportunity to participate in the development of the host communities through its Integrated Enhancement Program (IEP).

Once the work has begun, Hydro-Québec will grant eligible organizations funding equivalent to 1% of the initially authorized value of the new facilities, to be used for local enhancement initiatives that improve the community.

### Project schedule

Clearing the right-of-way	Summer – fall 2017
Building access roads	Summer – fall 2017
Building the line	Winter – fall 2018
Restoring the site and commissioning the line	Fall 2018

[www.hydroquebec.com/grand-brule-saint-sauveur](http://www.hydroquebec.com/grand-brule-saint-sauveur)

## For more information

SOPHIE LAMOUREUX  
Advisor – Community Relations  
E-mail: [lamoureux.sophie@hydro.qc.ca](mailto:lamoureux.sophie@hydro.qc.ca)

**Info-project line**  
1 800 465-1521, ext. 6022

*Ce document est également publié en français.*  
This document is a translation of the original French text.  
2017E0177-A-REV