

120-kV Tie Line to **Hydro-Sherbrooke's** Fourth Substation

INFORMATION ON SOLUTION SELECTED | FALL 2016



In order for its distribution system to meet growing needs, Hydro-Sherbrooke will build a fourth 120/25-kV substation in the borough of Rock Forest-Saint-Élie-Deauville. To supply this new substation, Hydro-Québec will redesign its 120-kV transmission system from Sherbrooke substation, which it operates in this borough.

PROJECT DESCRIPTION

The solution selected by Hydro-Québec consists in modifying the existing double-circuit line (circuits 1386-1387) by dividing it into two sections.

A short 1.5-km segment will be added to the first section, which will supply Hydro-Sherbrooke's Fourth Substation.

The second section will be connected to a new 5.8-km 120-kV double-circuit line. It will run along circuit 1385 from Sherbrooke substation to just south of Autoroute des Cantons-de-l'Est.

A PROJECT WITH THE LEAST IMPACT

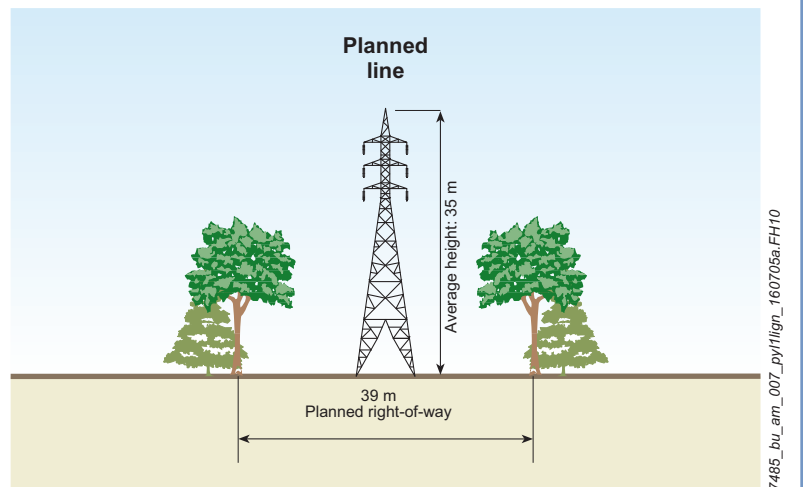
- The selected route avoids opening up a new corridor by running along existing lines for over 80% of its route.
- It limits encroachment on the territory since it runs along an existing line, reducing the width of the right-of-way.
- Most of the new towers will be positioned next to the existing line towers to mitigate the visual impact.

TANGIBLE SUPPORT FOR COMMUNITY DEVELOPMENT

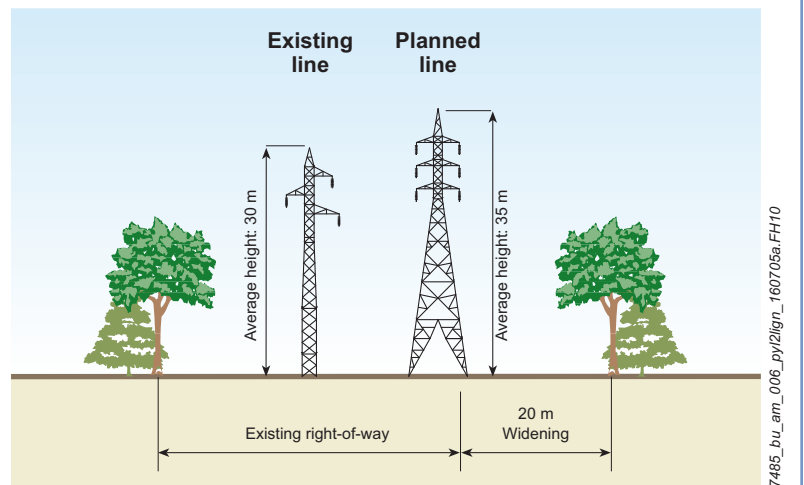
Hydro-Québec sees its projects as an opportunity to participate in the development of host communities. With this in mind, it grants eligible organizations funding equivalent to 1% of the initially authorized value of the facilities covered by the Integrated Enhancement Program. This amount is available for initiatives that will improve the living environment of the community.

PROJECT SCHEDULE

Permitting	Winter 2016-2017 to Fall 2017
Land clearing	Winter 2017-2018 to fall 2018
Construction	Spring to fall 2018
Commissioning	Fall 2018



7485_bu_am_007_py1/fign_160705a.FH10



7485_bu_am_006_py2/fign_160705a.FH10

TECHNICAL CHARACTERISTICS

Four-legged lattice towers will be used to carry the new segments.

The right-of-way of the 1.5-km line segment will be 39 m wide, while the right-of-way of the new 5.8-km section will need to be widened by 20 m along the existing circuit 1385.

FOR MORE INFORMATION

INFO-PROJECT LINE
1 877 653-1139

GINETTE CANTIN

Advisor – Community Relations – Richelieu
Direction – Affaires régionales et collectivités
705, boul. Clairevue Ouest, 1^{er} étage
Saint-Bruno-de-Montarville (Québec) J3V 6B6

www.hydroquebec.com/transmission-construction-projects/hydro-sherbrooke-fourth-substation/
www.ville.sherbrooke.qc.ca/en/sous-site/hydro-sherbrooke/

Ce document est également publié en français.
This is a translation of the original French text.

2016E0708-A-REV2