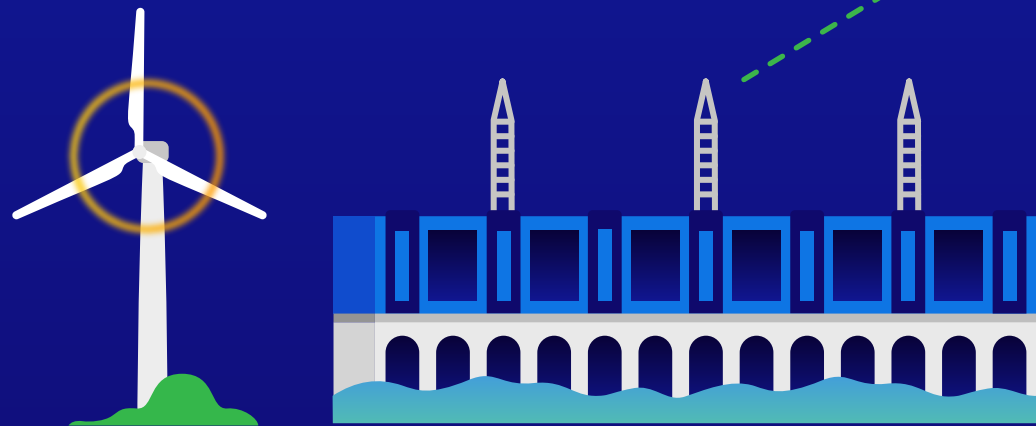


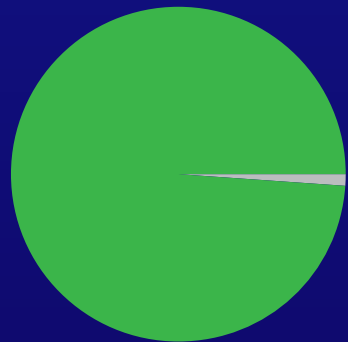
# What is a renewable energy certificate (REC)?

- **Unique proof of ownership of the environmental attributes** of a company's 100% renewable electricity consumption
- **Corresponds to the generation of one MWh of renewable energy**



RENEWABLE SOURCES

> 99%

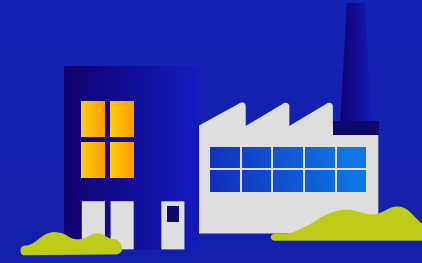


NON-RENEWABLE SOURCES

< 1%



TRANSMISSION AND DISTRIBUTION BY HYDRO-QUÉBEC



## 3 main benefits of purchasing RECs

### Company policy

Declare 100% renewable energy consumption and lower emissions from your supply chain.

### Market standards

Meet certification criteria for products, buildings or companies and comply with climate-related disclosure standards.

### Corporate image

Gain an edge over the competition.



- ✓ Your company's service address
- ✓ Number of MWh consumed
- ✓ **Traceability:**  
Renewable energy source location  
Generation date

