

Power system modernization in the Hampstead substation area

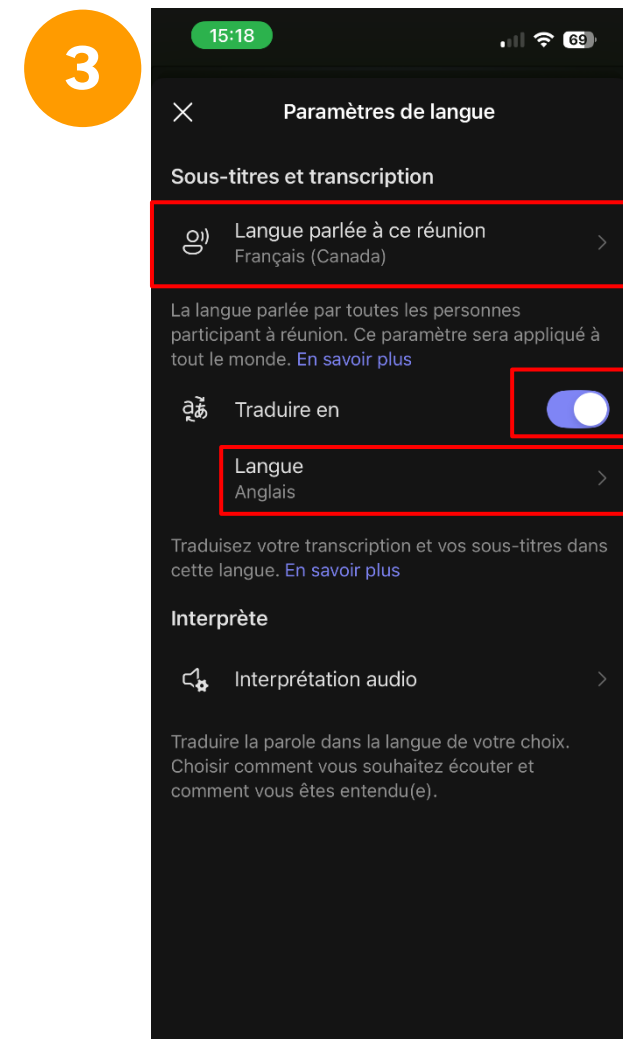
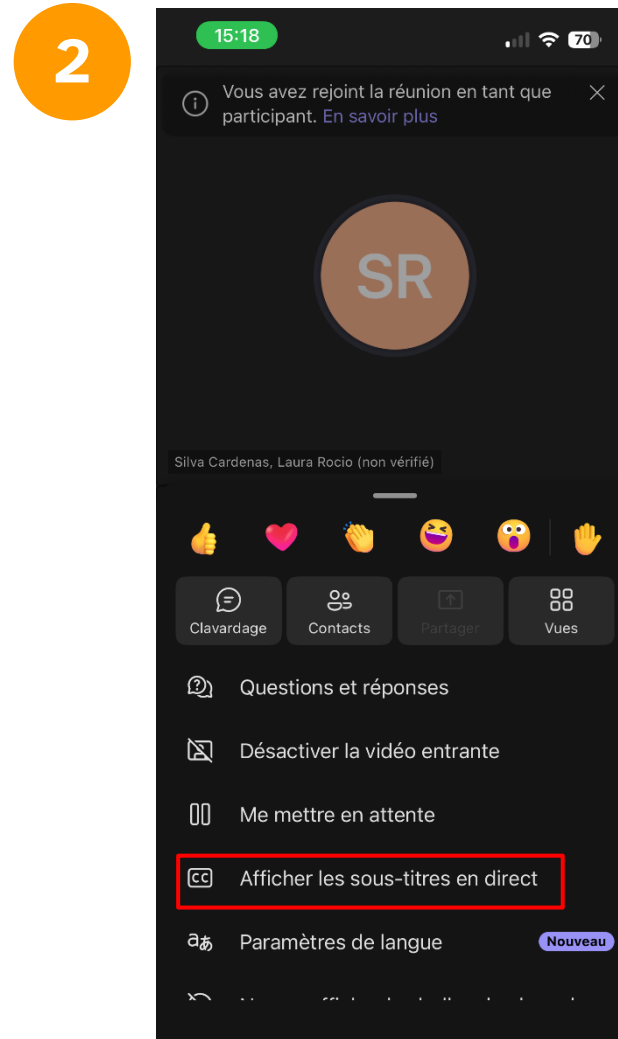
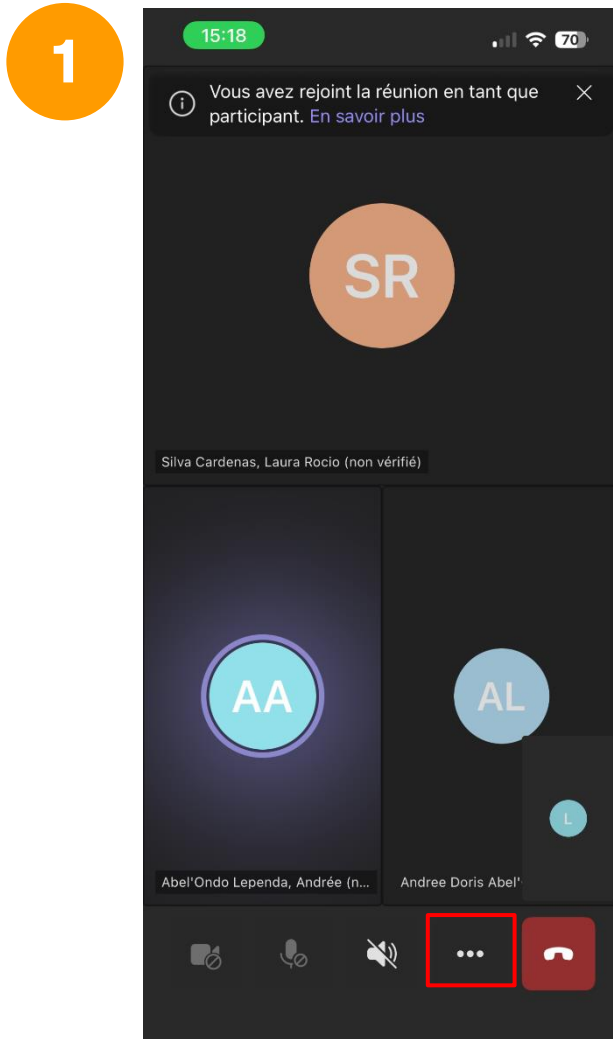
PUBLIC PROJECT INFORMATION SESSION

April 16, 2026



Viewing English subtitles

On a mobile phone



Viewing English subtitles

On a computer

The image shows a two-step process for enabling English subtitles in a Microsoft Teams meeting. Step 1 shows the meeting toolbar with the 'More' menu (three dots) highlighted in red. A yellow box highlights the 'Show live captions' option in the expanded menu. Step 2 shows the 'Language settings' panel with the 'Translate to' toggle switch turned on and 'English' selected in the dropdown menu, both highlighted in red. A red box also highlights the settings gear icon in the bottom right corner of the meeting window.

1 More

- Record and transcribe >
- Meeting info
- Video effects and settings
- Audio settings
- Show live captions
- Language and speech >
- Settings >
- Help

2 Language settings

Spoken language in this meeting

French (Canada)

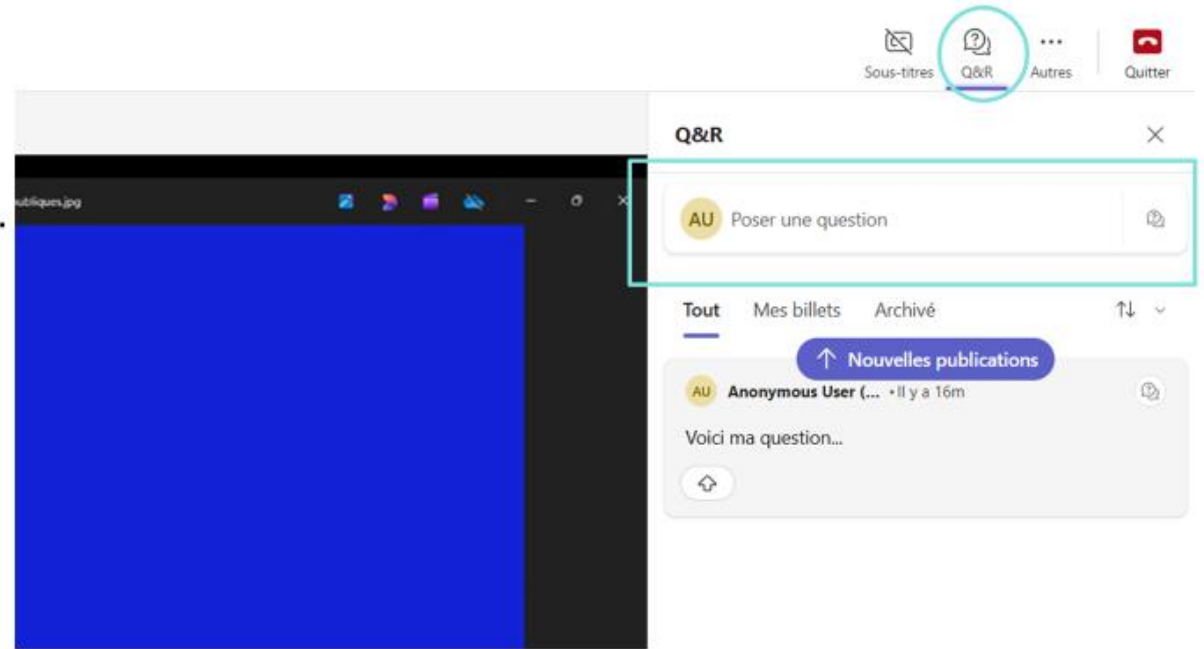
The language that everyone in the meeting is speaking. This setting will be applied to everyone. [Learn more](#)

Translate to

English

Translate your transcript and captions to this language. [Learn more](#)

Asking questions



Submitting questions:

- **Submit questions in writing using the Q&A icon at the top right of the Microsoft Teams screen.**
- **If you're participating on a cell phone, the Q&A icon is at the bottom of the screen.**
- **You may ask questions throughout the webinar.**
- **The presenters will answer them during the question period.**

Accessing documentation in English and French

www.hydroquebec.com/aqueduc-saraguay/en/



Power system modernization in the Hampstead substation area

PUBLIC PROJECT INFORMATION SESSION

April 16, 2026





Janis Crawford

Advisor –
Public Participation



Bruno Fiset, Eng.

Project Manager – Lines



Kevin Duchesne, Eng.

Construction Manager –
Substations



Ibrahim Jammal, Eng.

Civil Engineer



Sara-Eve Tremblay

Advisor – Regional Affairs
Montréal, Laval, Communauté
métropolitaine de Montréal



Fadi Noujaim, Eng.

Project Management –
Substations

Agenda

1. Project overview and explanation of differences between transmission and distribution lines
2. Main project phases (transmission and distribution)
Project description, period and duration, mitigation measures
3. Detailed information for the public: Parking and contact information
4. Question period

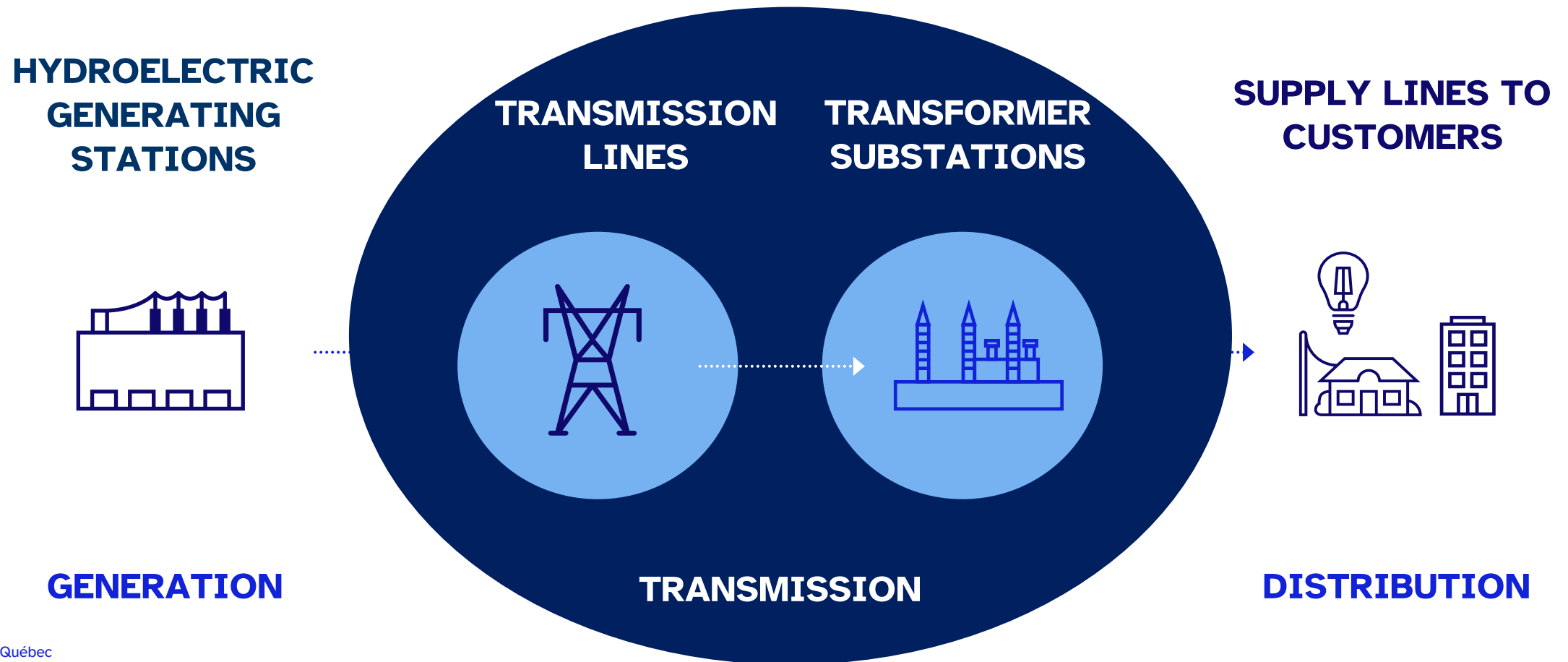
Context of the meeting

A number of projects are planned in the area served by Hampstead substation in Côte-Saint-Luc.

This area was affected by a major outage on January 24. The customers affected live in Côte-Saint-Luc, Côte-des-Neiges-Notre-Dame-de-Grâce and Montréal-Ouest. Because of the class action against Hydro-Québec, we cannot discuss this subject.

From the generating station to your home

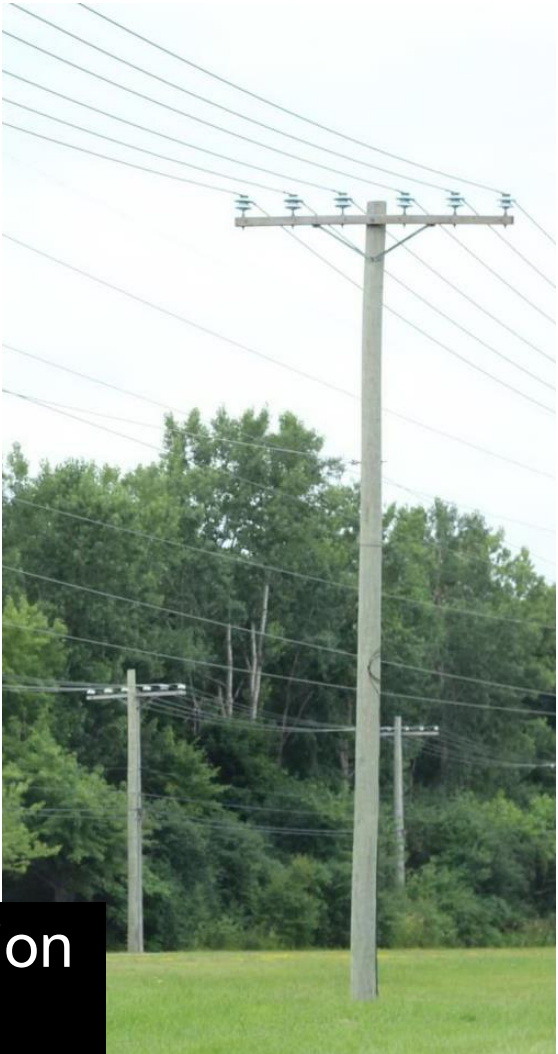
The project involves replacing power transmission infrastructure, including one **transmission line and two transformer substations**.



Transmission and distribution lines



Transmission line



Distribution lines

Voltage measurement (volts)

1 kilovolt (kV) = 1 000 volts (V)

120 kV = 120 000 volts
315 kV = 315 000 volts

12 kV = 12 000 volts
25 kV = 25 000 volts

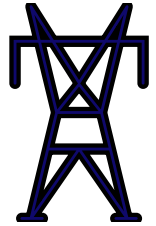


120 V

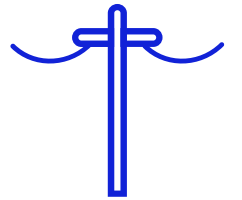


240 V

High
voltage



Medium
voltage



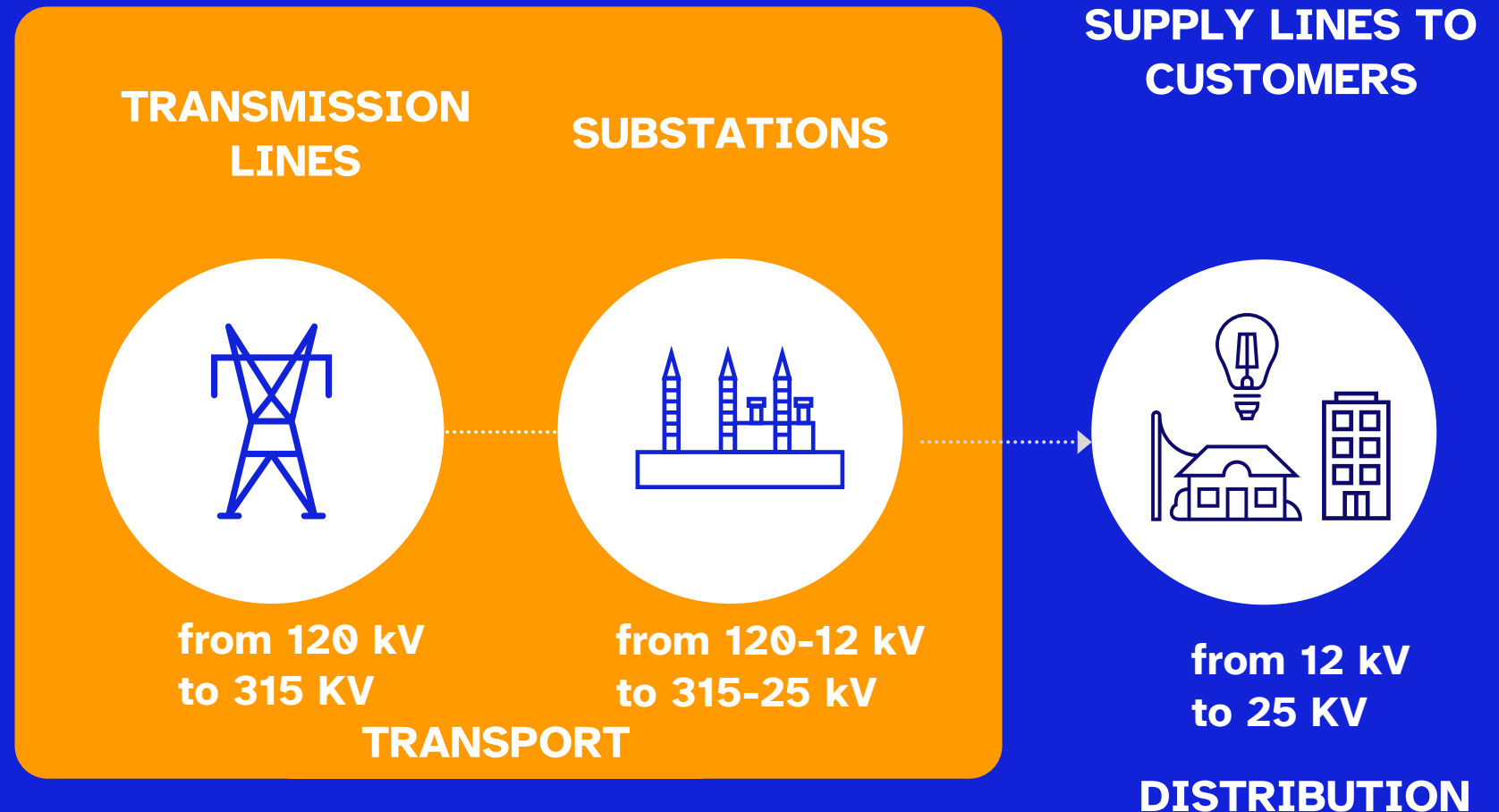
Low
voltage



Project objectives

- Meet the growing energy demand in the central west sector of Montréal's Island
Improve customer service quality.

This requires increasing the network voltage.



Aqueduc-Saraguay project

Phase 1 (2026-2029)

- Replacement of the 120-kV line with a 315-kV line and construction of Côte-Saint-Luc substation. Projects in Côte-Saint-Luc, Mont-Royal and the Borough of Saint-Laurent.

Phase 2 (2031-2034)

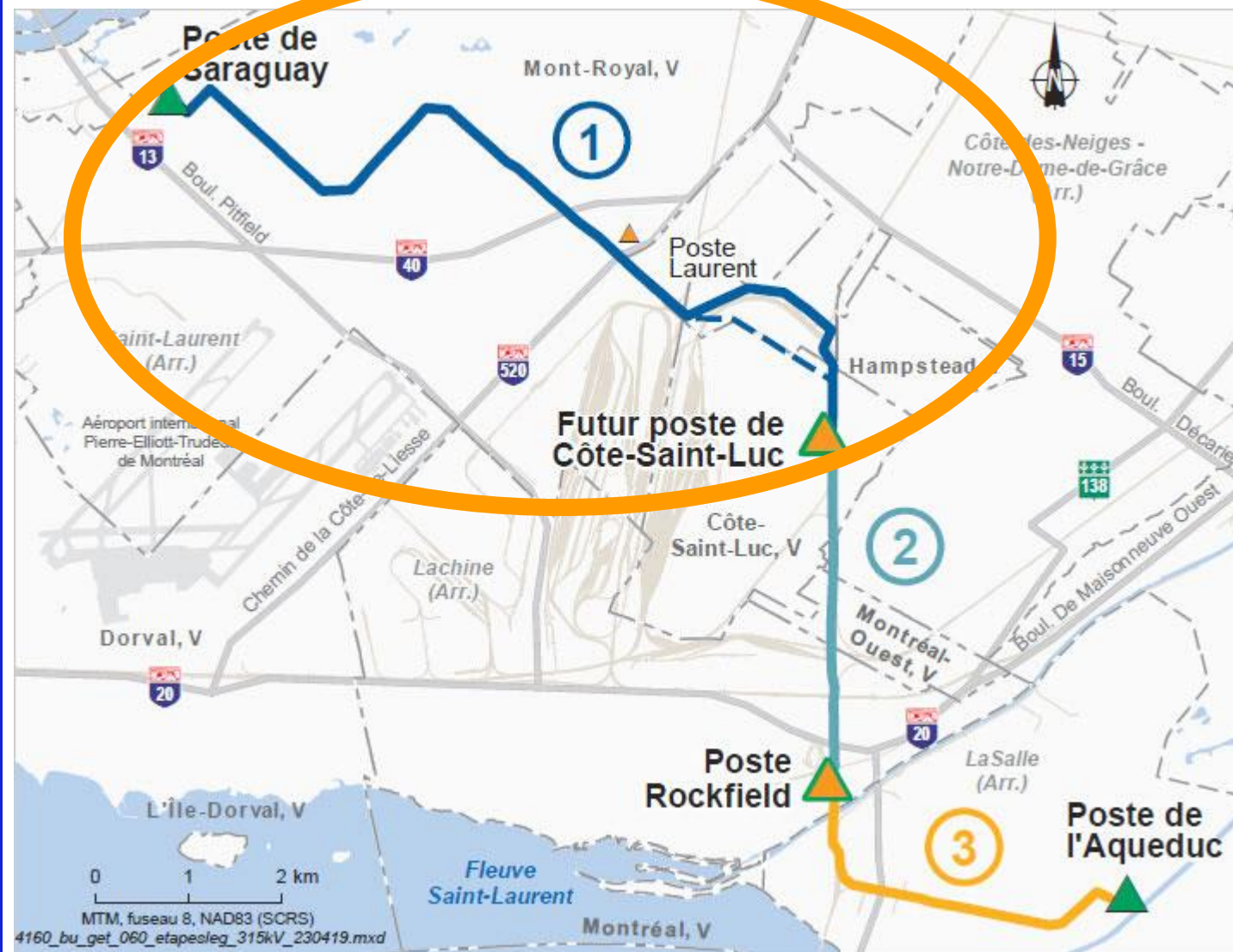
- Replacement of the 120-kV line with a 315-kV line and construction of the new Rockfield substation. Projects in Montréal-Ouest, Lachine and LaSalle.

Phase 3 (by 2040)

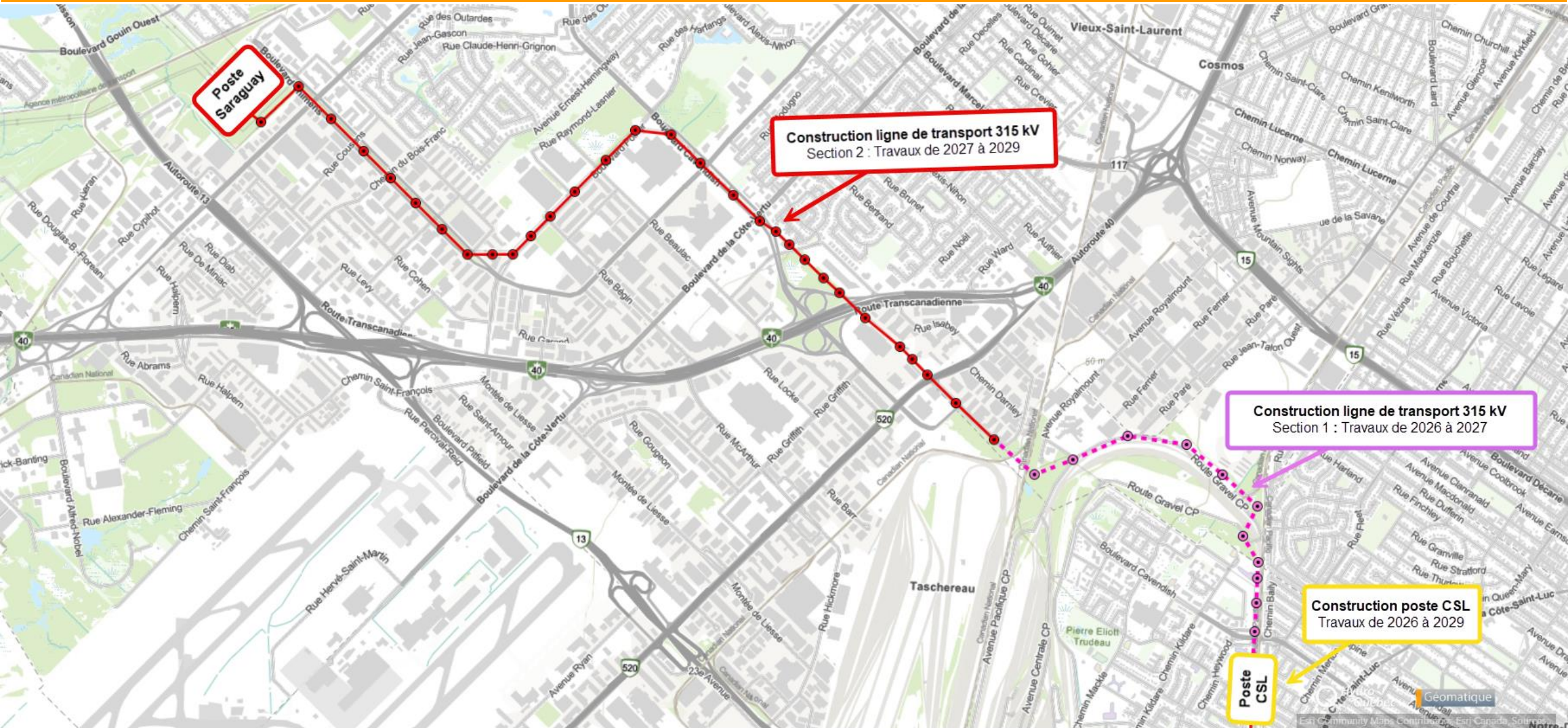
- Replacement of the 120-kV line with a 315-kV line and construction of the new Aqueduc substation. Projects in Lachine and LaSalle.

Distribution line conversion (2024-2034)

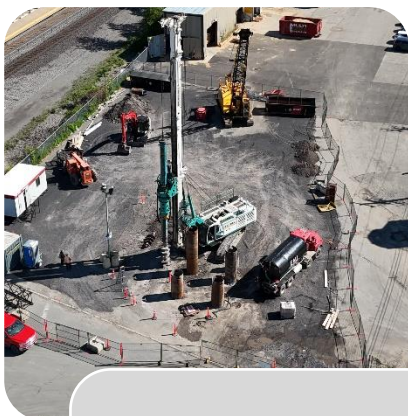
- Projects in Côte-Saint-Luc, Mont-Royal, Saint-Laurent, Mont-Royal, Hampstead, Montréal - Ouest, Lachine and LaSalle.



Aqueduc–Saraguay Project – Scope of Work – Phase 1



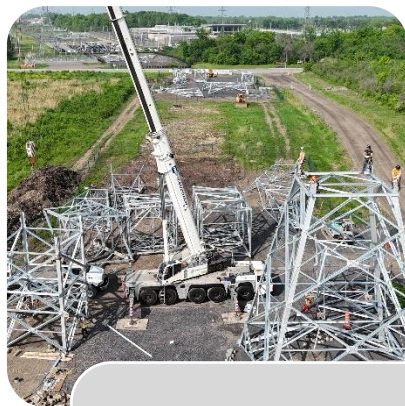
Main phases in construction of the line between Saraguay and Côte-Saint-Luc substations



Preparing jobsite and laying foundations

**Summer 2026–
Winter 2026**

Excavation, pile installation, concreting foundations



Building towers*

Fall 2026–Spring 2027

Assemble and erect towers

*Work conducted sequentially at tower site



Stringing and installing cables*

**Winter 2027–
Spring 2027**

Insulator assembly and cable and conductor stringing

*Work conducted sequentially, between 2 and 7 towers

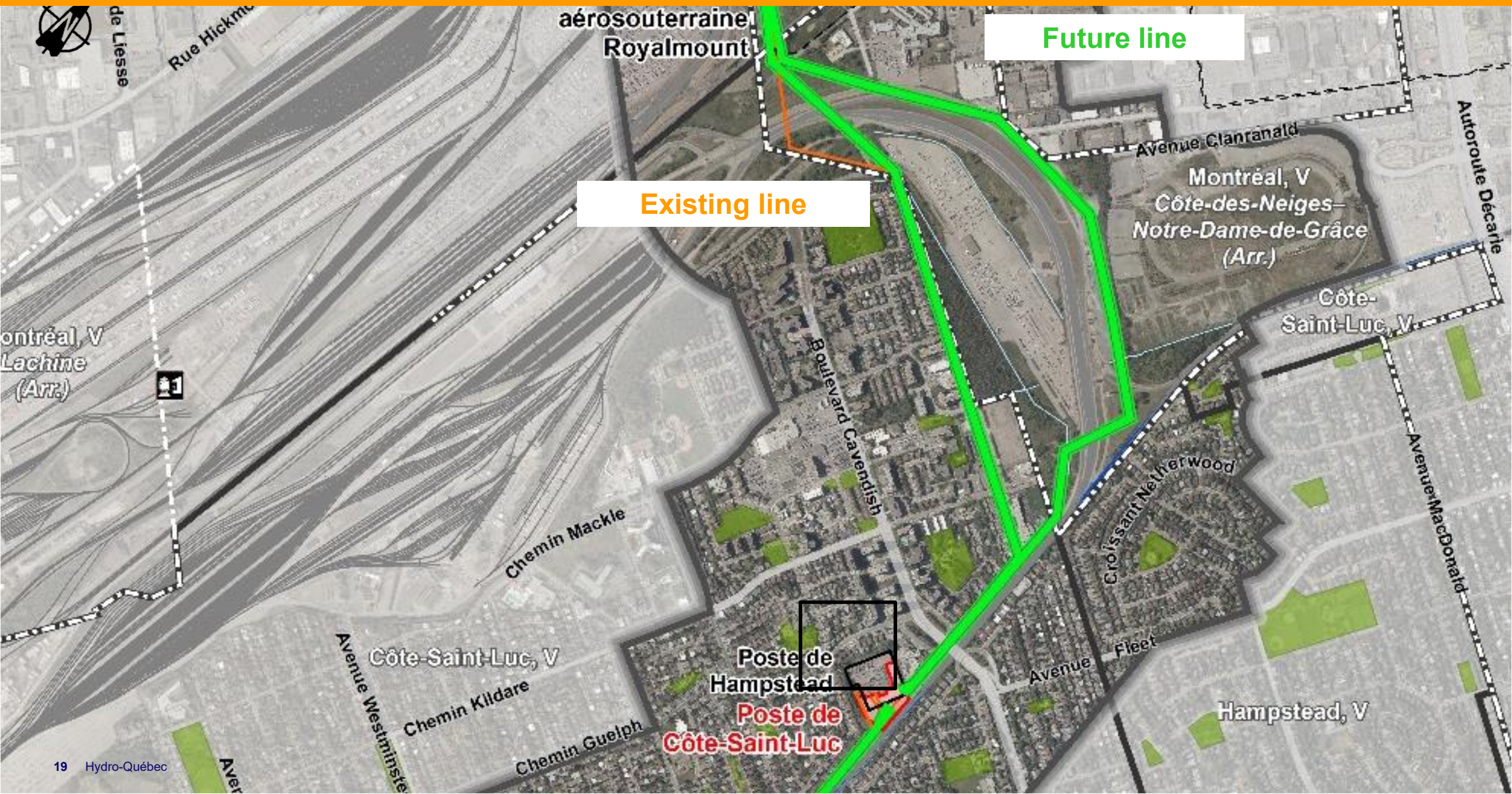


Restoration

Summer–Fall 2027

Land returned to its original condition and landscaping, if applicable

Construction of the new line in Côte-Saint-Luc

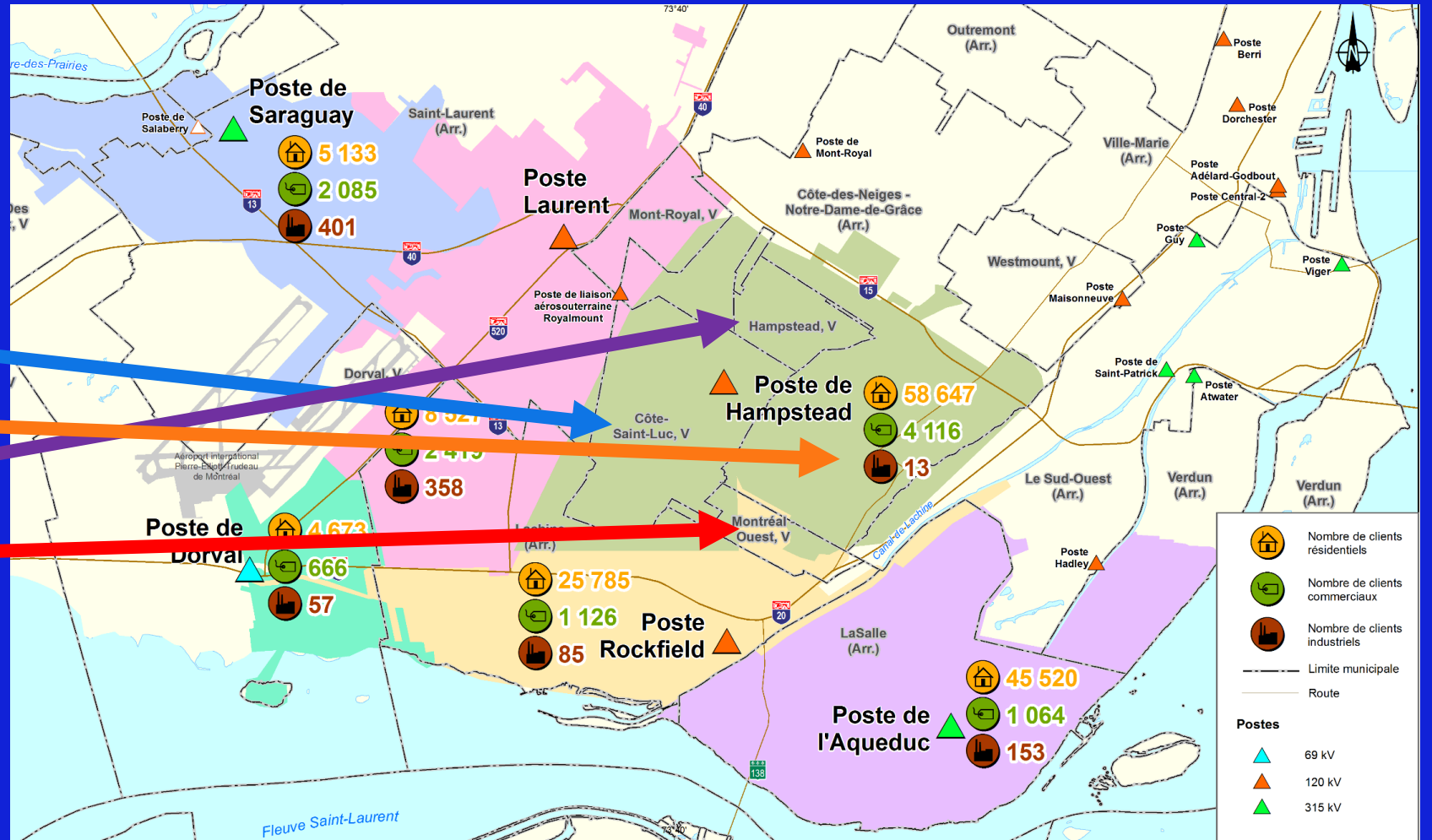


**Construction of new
Côte-Saint-Luc
substation**

Hampstead substation service areas

Hampstead substation and the future Côte-Saint-Luc substation will serve the following areas:

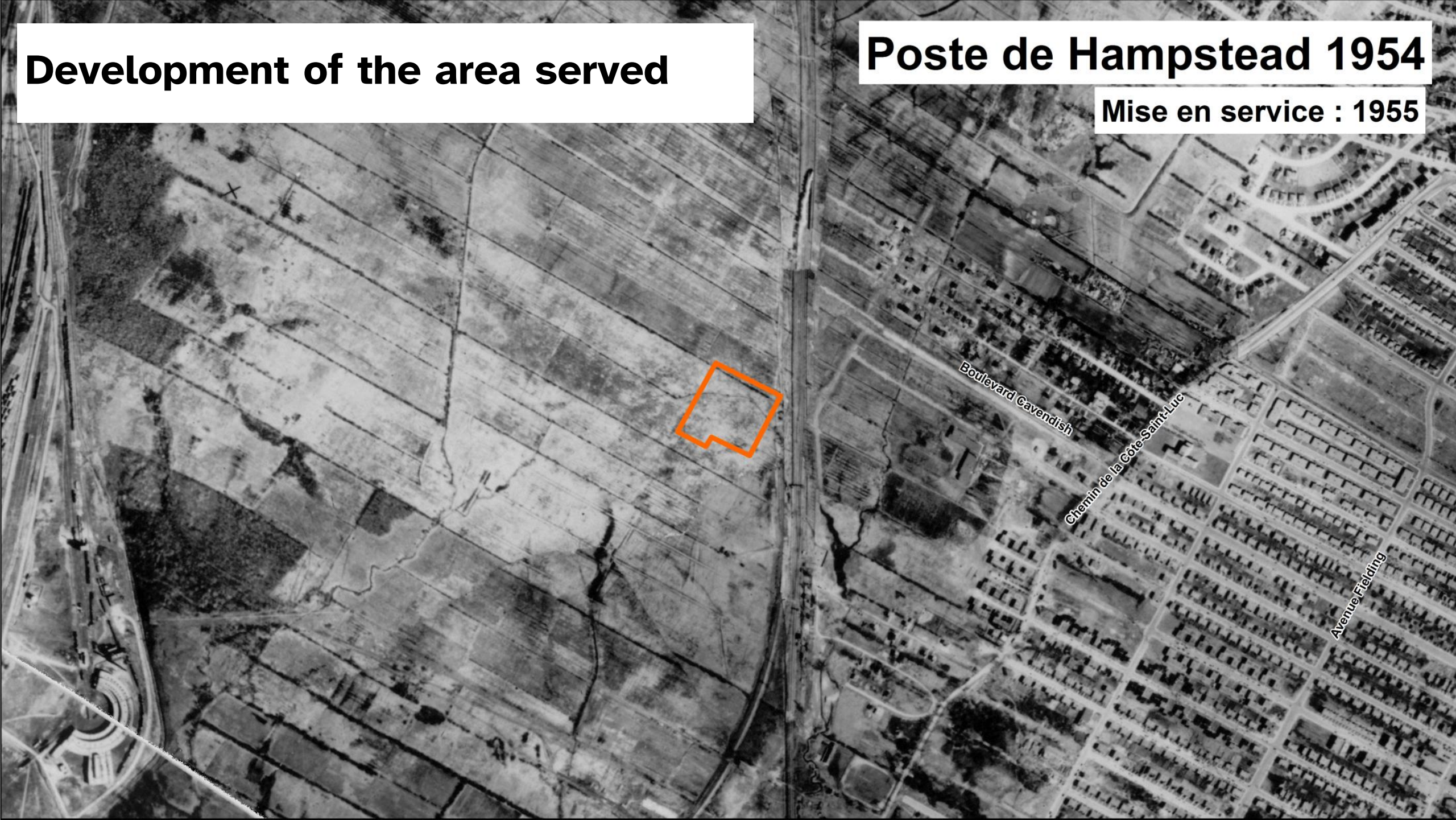
- Côte-Saint-Luc
- Côte-des-Neiges-Notre-Dame-de-Grâce
- Hampstead
- Montréal-Ouest



Development of the area served

Poste de Hampstead 1954

Mise en service : 1955



Existing Hampstead substation



View from Chemin Holland and the railway

Improvements to Côte-Saint-Luc substation in response to community requests

Reduction in building area and distancing from homes on Chemin Baily

Choice of contemporary architecture and adapted colours

Substation and fencing set back from the backyards of homes on Rue Sabin

View from Rue Heywood

New substation work area



Construction work on Côte-Saint-Luc substation



Jobsite preparation

January–May 2026

Create temporary access roads by clearing land (if necessary)

Install fencing and work platform

Deliver materials and mobilize machinery



Building site excavation

June–September 2026

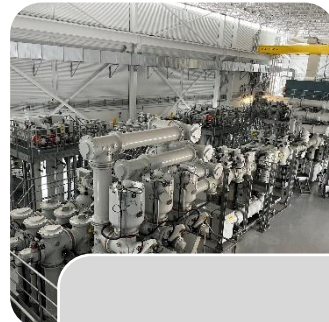
Excavate and install piles



Construction of building

October 2026–Spring 2027

Install concrete foundations and building structure



Building finishing and installation of electrical equipment

Summer 2027–Summer 2029

Exterior siding and finishing

25-kV and 315-kV equipment and connection

Commissioning



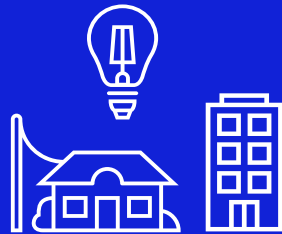
Restoration

Fall 2029

Restore the land to its original condition

Landscaping

Work on the distribution system



Distribution

The work aims to:

- Meet the growing energy demand in the area
- Improve customer service quality (reduce outages)

Once the electricity reaches the substation:
it must be distributed to customers the network must be maintained by carrying out :

- **electrical work**
- **civil engineering work**
- **vegetation management**



Electrical work on the distribution system

This work involves converting the lines and replacing obsolete electrical equipment and cables.
The work is short in duration.

Underground cable installation



Overhead cable installation



Civil engineering work on the distribution system

This work involves building a new underground network or reconstructing an existing, outdated network. The duration of the work may vary.



Construction of ducts and underground chambers



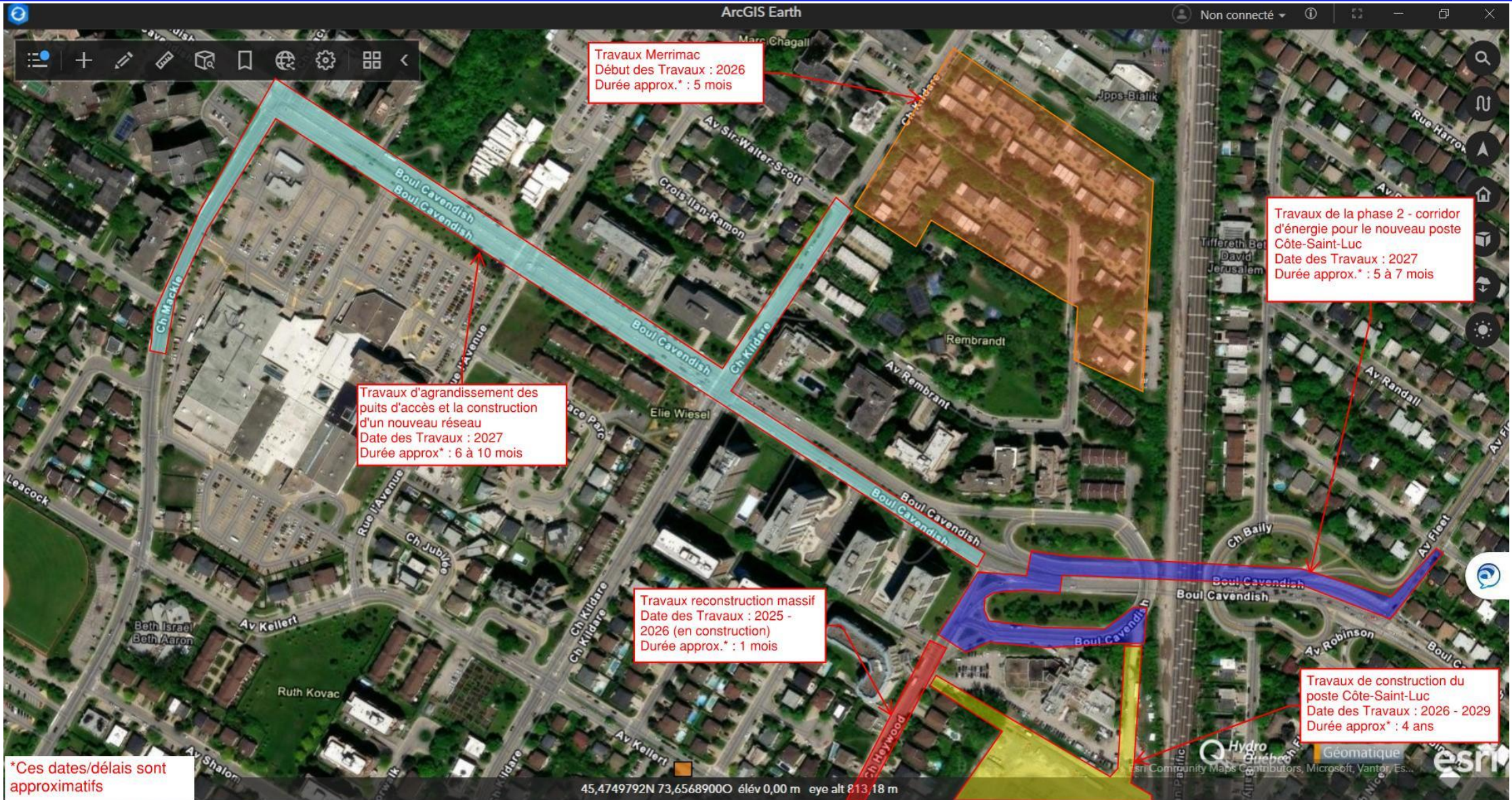
Distribution line work

- Côte-Saint-Luc
- Côte-des-Neiges-Notre-Dame-de-Grâce
- Montréal-Ouest
- Hampstead (completed)



Distribution line conversion work	Reporting Periods
Line Conversion (Zone 1 - CSL and Montreal-Ouest) <ul style="list-style-type: none"> - Field surveys - Preparatory work - Conversion work 	2024-2025 2027 2030
Line conversion (Zone 2 - NDG-CDN) <ul style="list-style-type: none"> - Field surveys - Preparatory work - Conversion work 	2026-2027 2028 2031
Line Conversion (Zone 3 - CSL and NDG) <ul style="list-style-type: none"> - Field surveys - Preparatory work - Conversion work 	2027-2028 2029 2032
Line Conversion (Zone 4 - CSL and NDG) <ul style="list-style-type: none"> - Field surveys - Preparatory work - Conversion work 	2028-2029 2030 2033
Line Conversion (Zone 5 - CSL) <ul style="list-style-type: none"> - Field surveys - Preparatory work - Conversion work 	2029-2030 2031 2034
Hampstead substation dismantling	After conversions

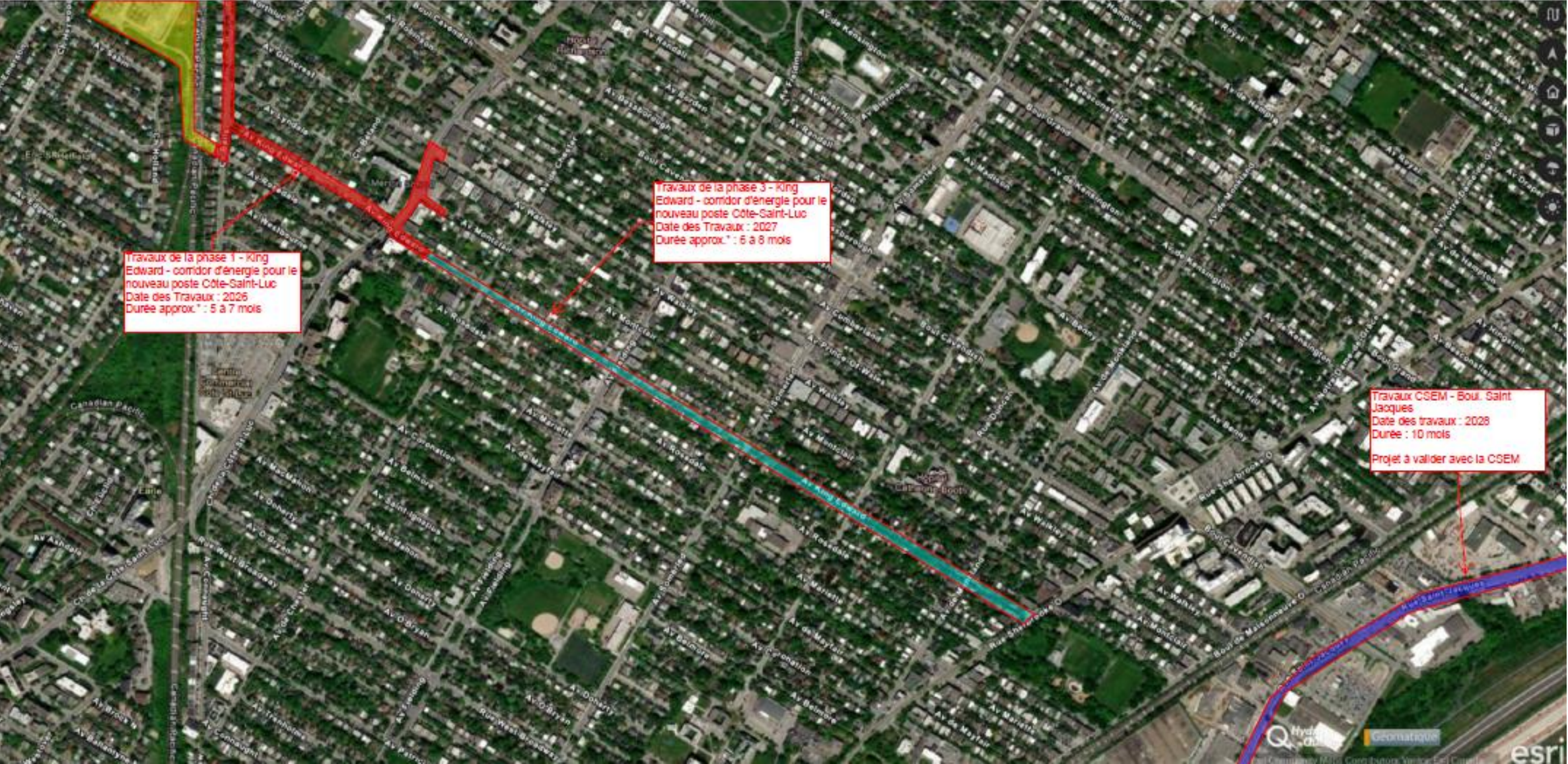
Planned civil engineering work by sector



Planned civil engineering work by sector



Planned civil engineering work by sector



Planned civil engineering work by sector



Work impacts and mitigation measures

Work impacts and mitigation measures

Impacts

- **Noise level**
- **Dust**
- **Vibrations**



Gestion des horaires de travail pour préserver la quiétude



Programme de contrôle et de gestion du bruit des équipements de chantier

Mitigation measures

- Restricted weekday work schedule (between 7 a.m. and 7 p.m.) unless absolutely necessary.
- Cleaning public roads and use of dust suppressants, if necessary.
- Noise management program
- Vibration monitoring and control with work stoppage as required.
- Pre-inspection of foundations of nearby residences (letters will be sent).
- Selection of vibration control techniques (tower foundations).

Work impacts and mitigation measures

Temporary impacts

- **Increased traffic**



Plan de circulation
et signalisation
appropriée



Mitigation measures

- Provide adequate signage and safety corridor for pedestrians.
- Station a signaller at strategic locations to ensure public safety.
- Develop a heavy vehicle traffic pattern.
- Traffic on public roads, use of parking lots adjacent to work sites and movement within the right-of-way.
- Provide parking for employees so they don't park on nearby streets.
- Provide notice to the public, the city and partners (STM) of lane closures.

Work impacts and mitigation measures

Temporary impacts

- **Service disruptions during power line work**

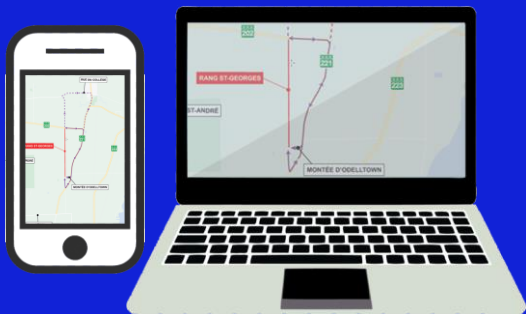
- **Tree pruning and tree removal**

Mitigation measures

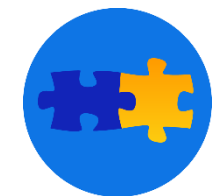
- Call customers to inform them prior to service disruption.
- Planned outages are generally carried out during the daytime. No outages during extreme cold weather.

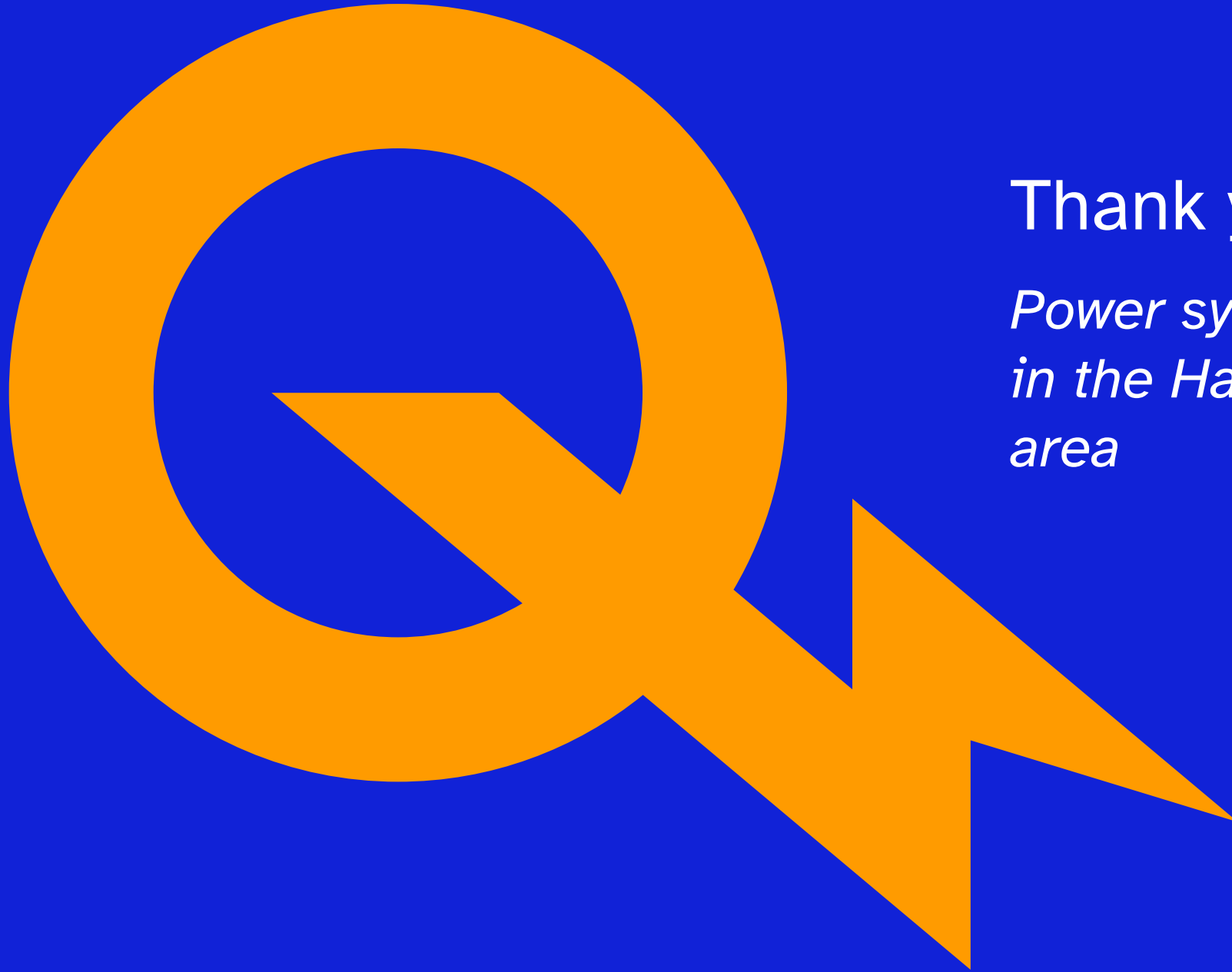
- Analysis conducted to minimize impacts on trees.
- Site restoration and reforestation carried out as required for construction, operation and maintenance.

Communication during the work



- Work information session (tonight)
- Project News bulletins will be delivered to local residents in their preferred language and will be available on the Hydro-Québec website.
- Project website and work notices posted online
www.hydroquebec.com/aqueduc-saraguay/en/
<https://www.hydroquebec.com/projects/montreal-laval-projects>
- Email:
affairesregionales@hydroquebec.com





Thank you!

*Power system modernization
in the Hampstead substation
area*