

**New substation in
downtown Montréal**

An innovative solution to support development in downtown Montréal

November 4, 5 and 6, 2025



Our objectives

From the very beginning of the project:

- **Initiate dialogue** with local residents.
- **Explain the project** and answer questions.
- Gather initial **comments and suggestions**.
- Establish a preferred **method of communication**.

Growing electricity needs in downtown Montréal

New development projects

- Quartier des lumières
- Îlot Voyageur
- Quartier Molson

Major institutional customers

- CHUM
- STM
- UQAM

Building decarbonization and transportation electrification will further increase demand.



The new substation is therefore essential for the economic and social development of downtown Montréal.

A new substation for a rapidly growing area

- Berri substation was commissioned **in 1968**. Close to 75% of the equipment is nearing the end of its service life, which increases the risk of outages and service restoration time.
- The substation is operating at 95% of its capacity and **will reach 100% by 2030**.
- The new substation cannot be built on the site of the current one given the need to **maintain electricity service** during construction.
- Construction of a new substation is part of the **strategy to modernize the infrastructure of the electric power transmission system**, which includes reconstruction of 27 substations, 10 of which have been completed.

From BAnQ to Miséricorde...

Since 2023, Hydro-Québec has met with approximately **200 individuals** concerning the substation project.

A total of **19 scenarios and 17 potential substation sites** were analyzed.

Spring 2024

- A total of **11 scenarios** within a 500-metre radius of the Berri site were evaluated.
- The **BAnQ** site was the only one that met the technical constraints.



Spring 2025

- **March 6**, letter from the President and CEO: “Hydro-Québec peut faire mieux” (Hydro-Québec can do better).
- **Eight new scenarios were analyzed.** Only one new scenario—very different from a technical perspective compared to the initial project—was promising: the **site of the Institut des Sœurs de Miséricorde.**
- Hydro-Québec will not be using the BAnQ site.

Why this site?

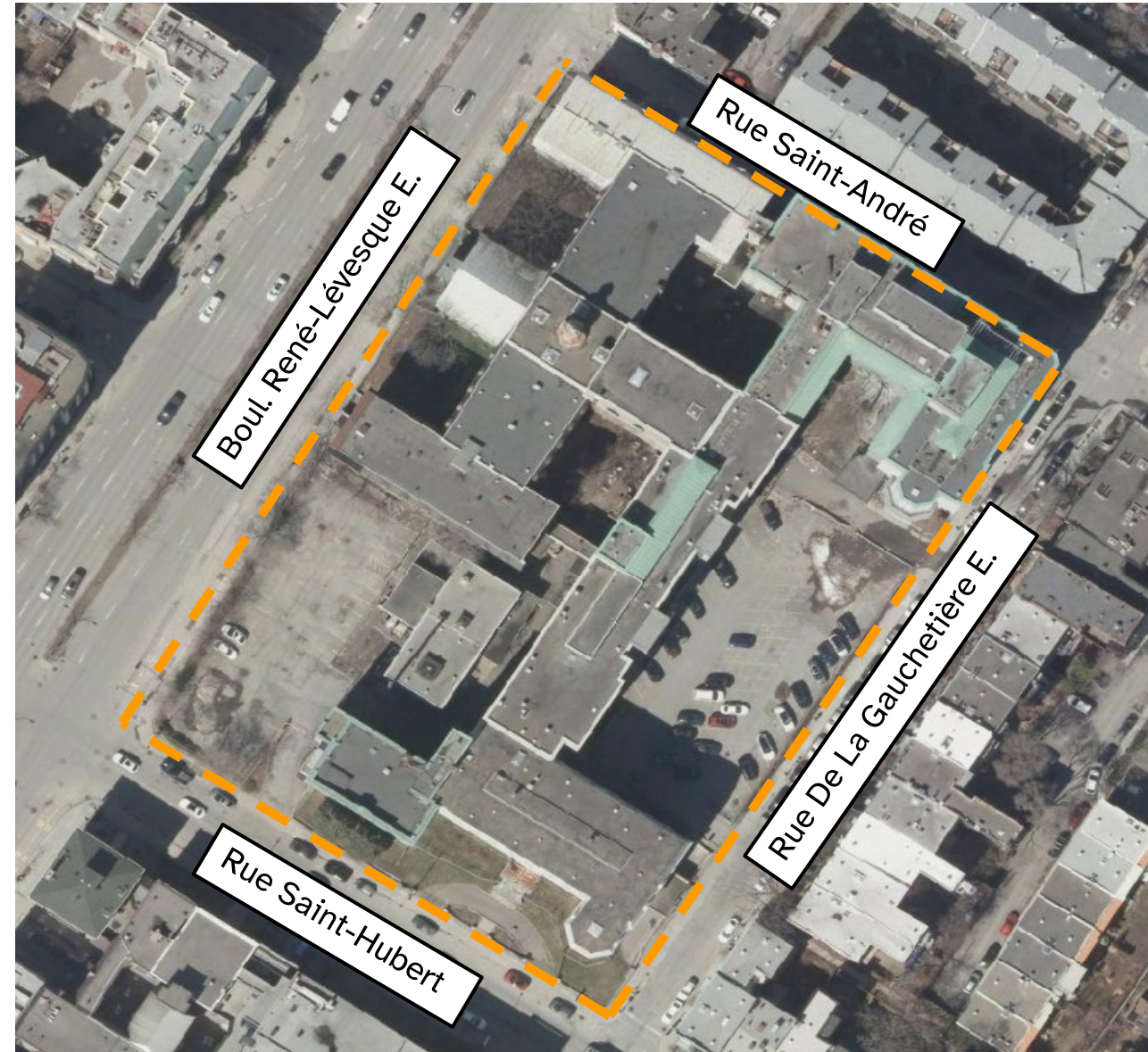
A new approach to the project design

- The new project will replace two projects that were under study: the new Berri and Dorchester substations.
- Significant efforts were made to combine the two projects by developing the concept of a **pivot substation**.
- The new pivot substation requires **acquisition of a single site** (rather than two) in a densely built downtown area.



A new 315/25-kV substation in downtown Montréal

- A new 315/25-kV “pivot” substation to support the development of downtown Montréal
- Fully indoor substation located on the site formerly belonging to the Institut des Sœurs de Miséricorde.
- Firm commitment by Hydro-Québec to design a substation that blends seamlessly with its surroundings and is safe for the residents and the other infrastructure
- An undertaking by Hydro-Québec to enhance part of the heritage buildings and engage with the community to integrate community-oriented spaces into the project
- Commissioning planned for 2034



Institut des Sœurs de Miséricorde

Architectural, landscape and historical value

1947 | Expansion of the hospital
(largest French-language
obstetrics unit in Canada)

1947 | Crèche of the Sœurs de
Miséricorde (replacing the one
from 1898) and construction of
the current pavilion in 1946

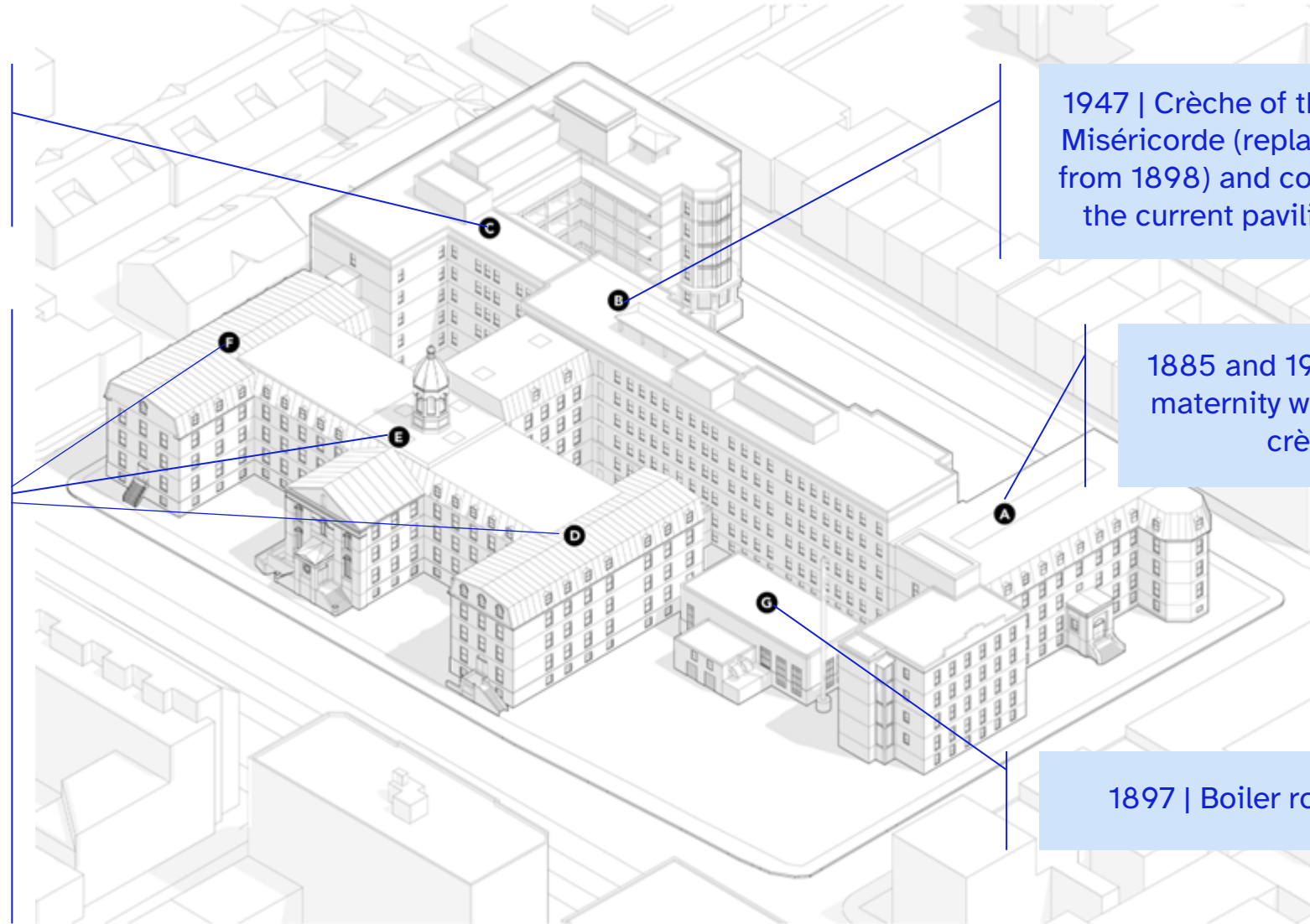
1853-1897 | D, E and F pavilions

Hail back to the first convents
and hospitals, Similar plans to
those of the Sœurs Grises, the
Sœurs du Bon-Pasteur and Hôtel-
Dieu de Montréal

Pavilion E housing the
community's former chapel

1885 and 1923 | Second
maternity ward and first
crèche

1897 | Boiler room



Building a substation in downtown Montréal

Our goal: safe, harmonious coexistence for residents and for neighbouring infrastructure

Harmonious integration of urban, architectural and heritage landscapes

- Benchmarking of best practices in urban integration at the international level
- Organization of an architecture competition for the new pivot substation
- Enhancement of part of the heritage buildings
- Commitment to engage in dialogue with local residents and organizations
- Commitment to consult with architectural and heritage specialists

Building a substation in downtown Montréal

Our goal: safe, harmonious coexistence for residents and for neighbouring infrastructure

Harmonious integration of urban, architectural and heritage landscapes

- Benchmarking of best practices in urban integration at the international level
- Organization of an architecture competition for the new pivot substation
- Enhancement of part of the heritage buildings
- Commitment to engage in dialogue with local residents and organizations
- Commitment to consult with architectural and heritage specialists

A project that is safe for our neighbours

- The public health authorities of Canada and Québec agree that the electric and magnetic fields we are exposed to daily do not pose a health risk.

Building a substation in downtown Montréal

Our goal: safe, harmonious coexistence for residents and for neighbouring infrastructure

Harmonious integration of urban, architectural and heritage landscapes

- Benchmarking of best practices in urban integration at the international level
- Organization of an architecture competition for the new pivot substation
- Enhancement of part of the heritage buildings
- Commitment to engage in dialogue with local residents and organizations
- Commitment to consult with architectural and heritage specialists

A project that is safe for our neighbours

- The public health authorities of Canada and Québec agree that the electric and magnetic fields we are exposed to daily do not pose a health risk.

Temporary mitigation measures during the construction period (beginning in 2029)

Examples



Management of work schedules to preserve tranquility



Appropriate traffic plan and signage



Worksite equipment noise control and management program

Environmental studies

In the coming months, Hydro-Québec will conduct an environmental study to acquire as much knowledge as possible about the project's host environment.

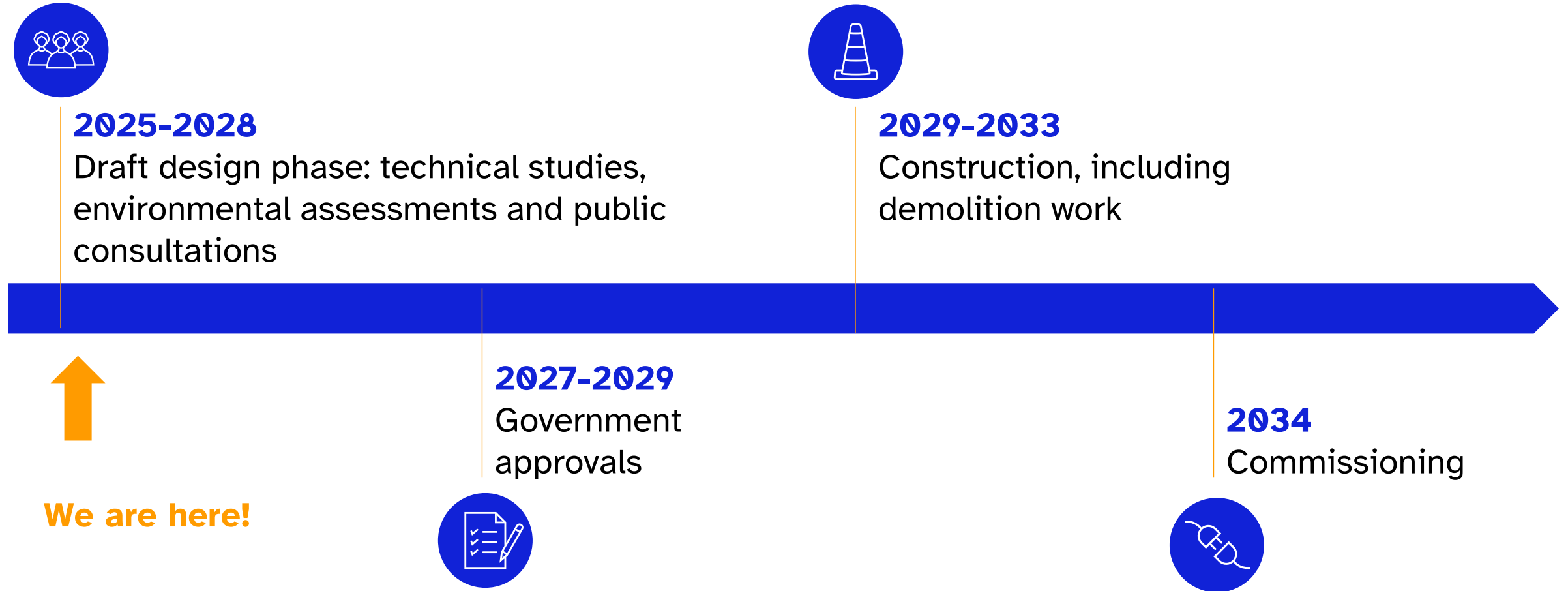
The study will address these issues:

- ambient noise ;
- archeology and heritage ;
- human environment, landscape and visual integration ;
- land use and planning ;
- environmental soil and waste characterization ;
- issues and impacts ;
- sustainable development and climate change ;
- analysis of cumulative effects.

The knowledge obtained will allow the team to design a project that is optimized based on the constraints and components of the environment and to develop appropriate mitigation measures to reduce the project's environmental impact as much as possible.

Preliminary project schedule

Main project phases



This schedule is preliminary, and the dates may change as the project moves forward.

Next steps

Fall 2025 – Winter 2026

- Continuing consultations with local residents and community-based organizations
- Contribution of heritage specialists
- Initial technical and archeological studies



Let's talk!

We want to develop the project with your collaboration. Please send us your questions and feedback about the project at any time.

To learn more about the project :

Website

<https://www.hydroquebec.com/projects/downtown-montreal/>

Project newsletter

Use [this link](#) to sign up for our newsletter.

To get in touch with us :

Info-Project Line

1 866 388-1978

Email

Affairesregionales@hydroquebec.com