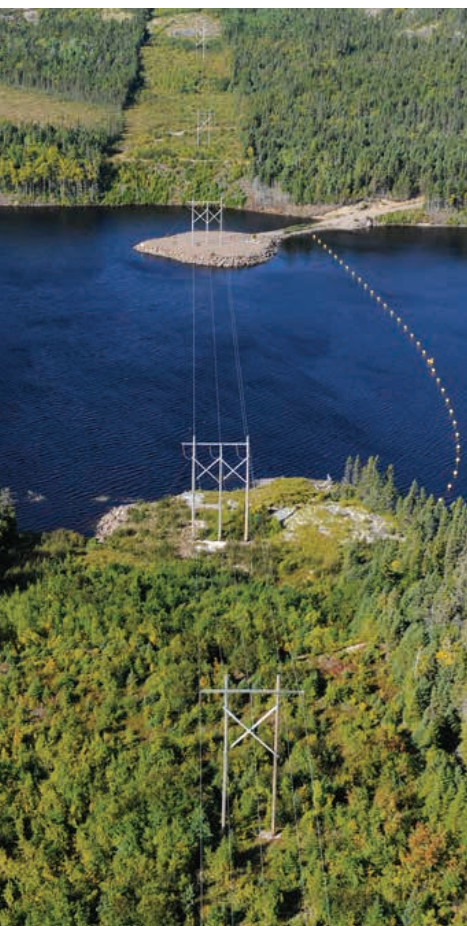


Connecting La Romaine and Unamen Shipu

INFORMATION ON THE PROJECT • FALL 2017



Securing electricity supply

The thermal generating station supplying the village of La Romaine will soon reach the end of its useful life, and Hydro-Québec has determined that the best way to ensure the community's continued supply of electricity is a connection to the main system. To do so, the company must build the following facilities:

- A distribution line on wooden poles from Pointe-Parent to the Rivière Natashquan (segment 1)
- A substation near the Rivière Natashquan to raise the voltage from 25 to 34.5 kilovolts (kV)
- A 75-km line insulated to 161-kV but operated at 34.5 kV between the Rivière Natashquan and the village of La Romaine (segment 2) that is supported by wooden H-frames and steel towers for some river crossings
- A substation near La Romaine airport to lower the voltage from 34.5 to 12.5 kV
- A 7-km distribution line between this substation and the heart of the village, a phase that will include modifications to the existing system (segment 3)
- A small substation in Kegaska to supply the village with back-up electricity

Connecting La Romaine will secure the community's supply and replace the energy produced by a diesel-based generating station with hydropower, a renewable energy source.



Environmental and technical studies

In summer and fall of 2017, Hydro-Québec conducted environmental and technical studies in the project's study area. Details about the area's environmental and human components were obtained through surveys of the natural environment, archeological surveys and land-use and landscape studies. Technical studies were also carried out to document the type of soil and identify the areas prone to ice buildup and erosion. All of this information was taken into consideration in determining the line route and the preliminary location of structures.



www.hydroquebec.com

Schedule

Commissioning is slated for late 2019. La Romaine thermal generating station will be shut down in 2020, after which it will be dismantled and the site will be restored.

Information on the route	Fall 2017
Filing of environmental assessment	Winter 2018
Clearing of right-of-way and substation sites	Spring 2018
Building of the lines and substations	Fall 2018 to fall 2019
Commissioning	Late 2019

*Ce document est également publié en français.
Ume mashinaikan unuipanitakanu ashit e innushtet.
2017E2152-A*



Support for community development

Hydro-Québec sees its projects as an opportunity to participate in the development of host communities. It grants admissible organizations funding equivalent to 1% of the initially authorized value of the new facilities through its Integrated Enhancement Program. These funds apply to initiatives designed to help local communities improve their environment.

Public participation

Information and consultation sessions are scheduled for each stage of the project with representatives from the communities concerned (Natashquan, Nutashkuan, Kegaska, Unamen Shipu and La Romaine).

Any questions or concerns can be submitted to the following people:

MARIE-JULIE ROY

Advisor – Community Relations
1 855 294-3777
roy.marie-julie@hydro.qc.ca

PATRIC FRIGON

Advisor – Aboriginal Relations
418 294-3563
frigon.patric@hydro.qc.ca

