



## CONSULTATION INFORMATION

Spring 2021

# 25/120-kV substation in Val-des-Monts and 120-kV supply line

---

To meet the growing demand for electricity in the region and improve the reliability and quality of the power system, Hydro-Québec plans to build a new 120/25-kV substation in Val-des-Monts.

The substation will replace La Lièvre substation in Val-des-Bois, whose equipment has reached the end of its service life.

To supply the new Val-des-Monts substation, a 120-kV single-circuit line will be built. The line will be connected to the transmission system at Val-des-Bois, on the line between High Falls and Notre-Dame-du-Laus substations. Once the new equipment is commissioned in 2024, La Lièvre substation will be dismantled.

This information bulletin details the study area, proposed substation site, two proposed line routes and the project's technical characteristics.

### A PROJECT FOR THE REGION

- Meet the growing demand for electricity in the region
- Improve the reliability and quality of the power system
- Replace equipment that is nearly 60 years old

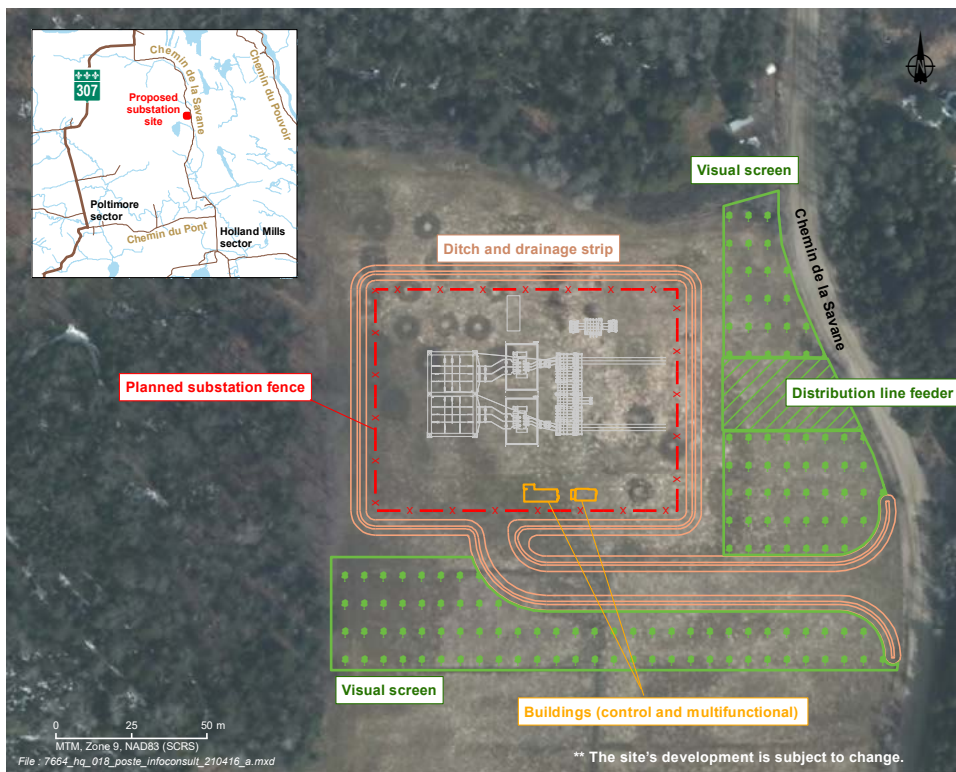
## Proposed substation site

In fall 2020, Hydro-Québec conducted inventories of the biophysical and human environments, as well as geotechnical studies to characterize the soil.

The site was chosen based on these criteria:

- limitation of the length of the supply line
- easy access by Chemin de la Savane
- sufficiently large area of flat and stable ground
- proximity to the load center
- avoidance of wetlands, waterways and tapped sugar bushes
- distance from residences

Because the substation will be located on grazing land on Chemin de la Savane in Val-des-Monts, clearing will be limited. A vegetation screen on the south and east sides will enhance the substation's visual integration into the landscape.



## Preliminary technical characteristics of the proposed substation

The fenced area of Val-des-Monts substation will take up approximately 7,300 m<sup>2</sup> (0.73 ha), in addition to a ditch and drainage strip. Two 120/25-kV transformers will be installed, along with an initial two 25-kV distribution feeder bays out of a possible four. A control building and multifunctional building are also planned.

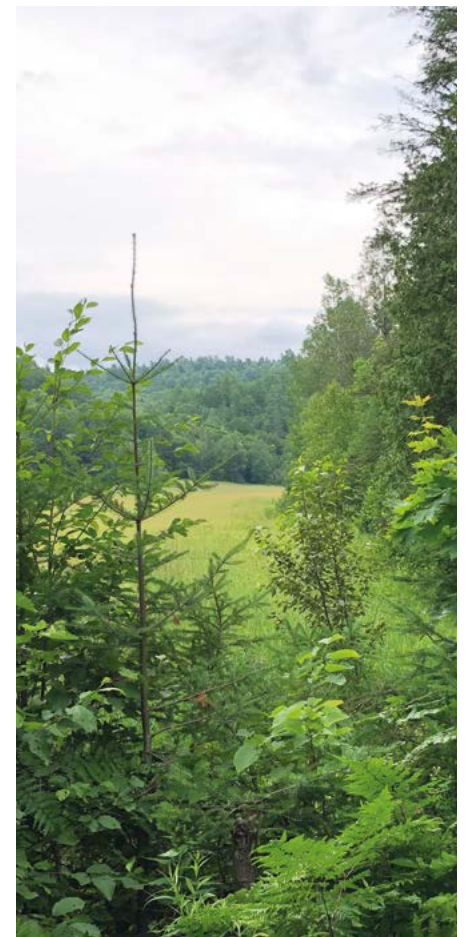
## Study area

Hydro-Québec established a study area to determine the substation location and line routes with the least impact. It considers all the biophysical and human elements that are likely to be affected by the project. Extending some 34 km<sup>2</sup>, the study area is situated entirely in Outaouais and crosses the municipalities of Val-des-Bois and Bowman in the MRC of Papineau, and of Val-des-Monts in the MRC of Collines-de-l'Outaouais. It is bordered by L'Escalier reservoir to the north and Chemin du Pont to the south.

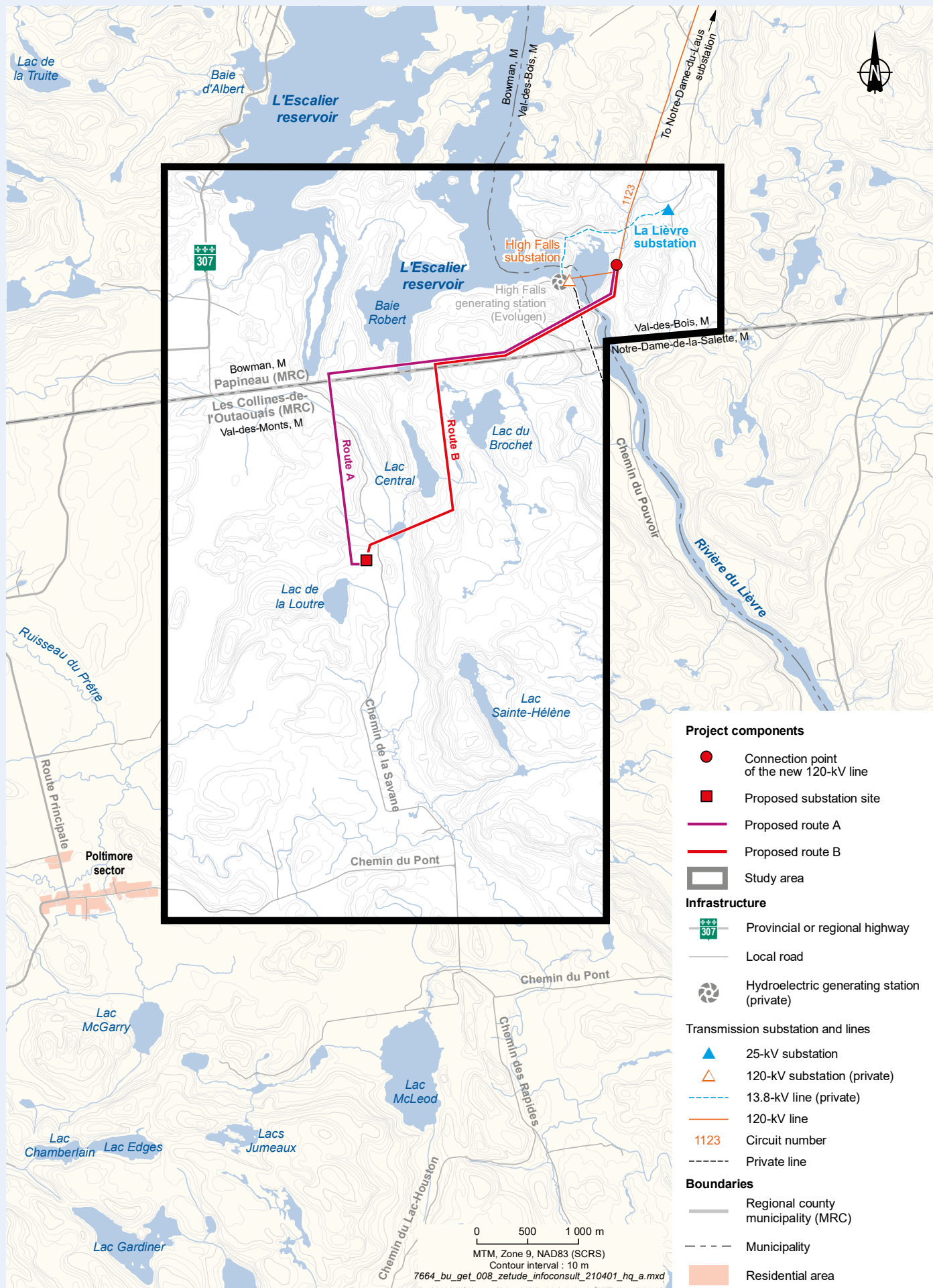
The study area has a low population density with private land used for farming, forestry, recreation and tourism.

Studded with a few small lakes, the landscape is made up of cultivated fields and wooded hills. There are buildings and forest patches in the valleys.

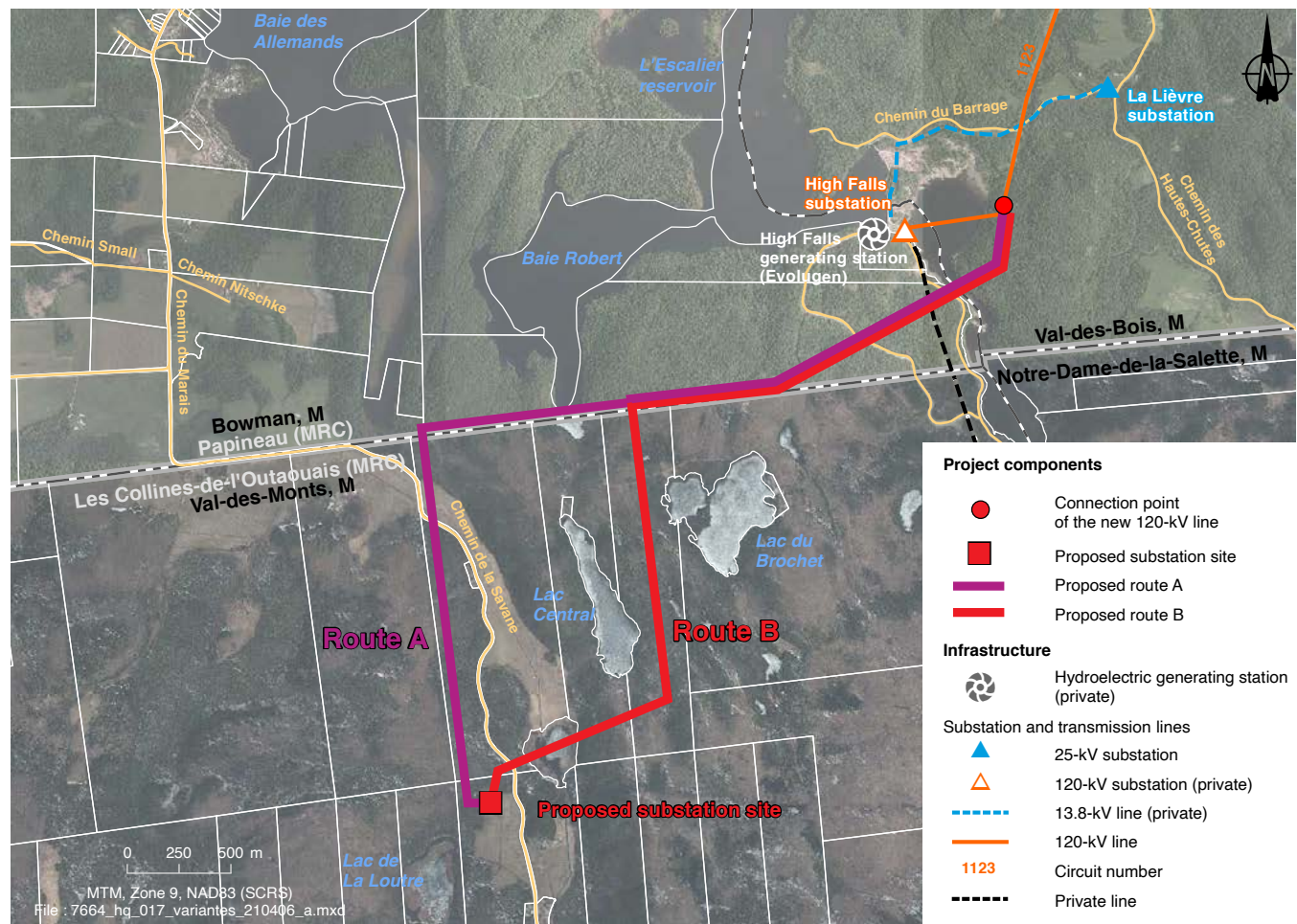
Vacation, tourism and recreational activities are mainly concentrated in the area around L'Escalier reservoir. In the southern part of the study area, there are ATV, horseback riding and recreational trails.



# Study area



## Proposed line routes



## Proposed line routes

The proposed line routes were developed based on these criteria:

- shortest and most direct route
- no steep slopes
- avoidance of large bodies of water
- avoidance of the white-tailed deer yard
- optimal integration of the line into the landscape
- distance from populated areas and farm buildings
- no territory fragmentation
- avoidance of wetlands and tapped sugar bushes as much as possible

For more information, see the map of environmental elements sensitive to the installation of electrical infrastructure at [www.hydroquebec.com/projects/val-des-monts/](http://www.hydroquebec.com/projects/val-des-monts/).

## Description of routes

The connection point of the supply line is on the 120-kV line between High Falls and Notre-Dame-du-Laus (circuit 1123) substations in Val-des-Bois, southwest of La Lièvre substation.

**ROUTE A** The line heads southwest, crosses Rivière du Lièvre downstream of High Falls generating station, runs above the private line (black dotted line) and then goes westward along the administrative boundary between Papineau and Collines-de-l'Outaouais MRCs and an extensive white-tailed deer yard. It then turns 90 degrees due south over Chemin de la Savane to the west side of the future substation.

Route A runs approximately 5.1 km.

**ROUTE B** For the first 2.2 km, route B is identical to route A, up to about halfway along the administrative boundary between the MRCs. Then, the line turns 90-degrees toward the south, runs between Lac Central and Lac du Brochet and heads west to cross Chemin de la Savane up to the north side of the future substation.

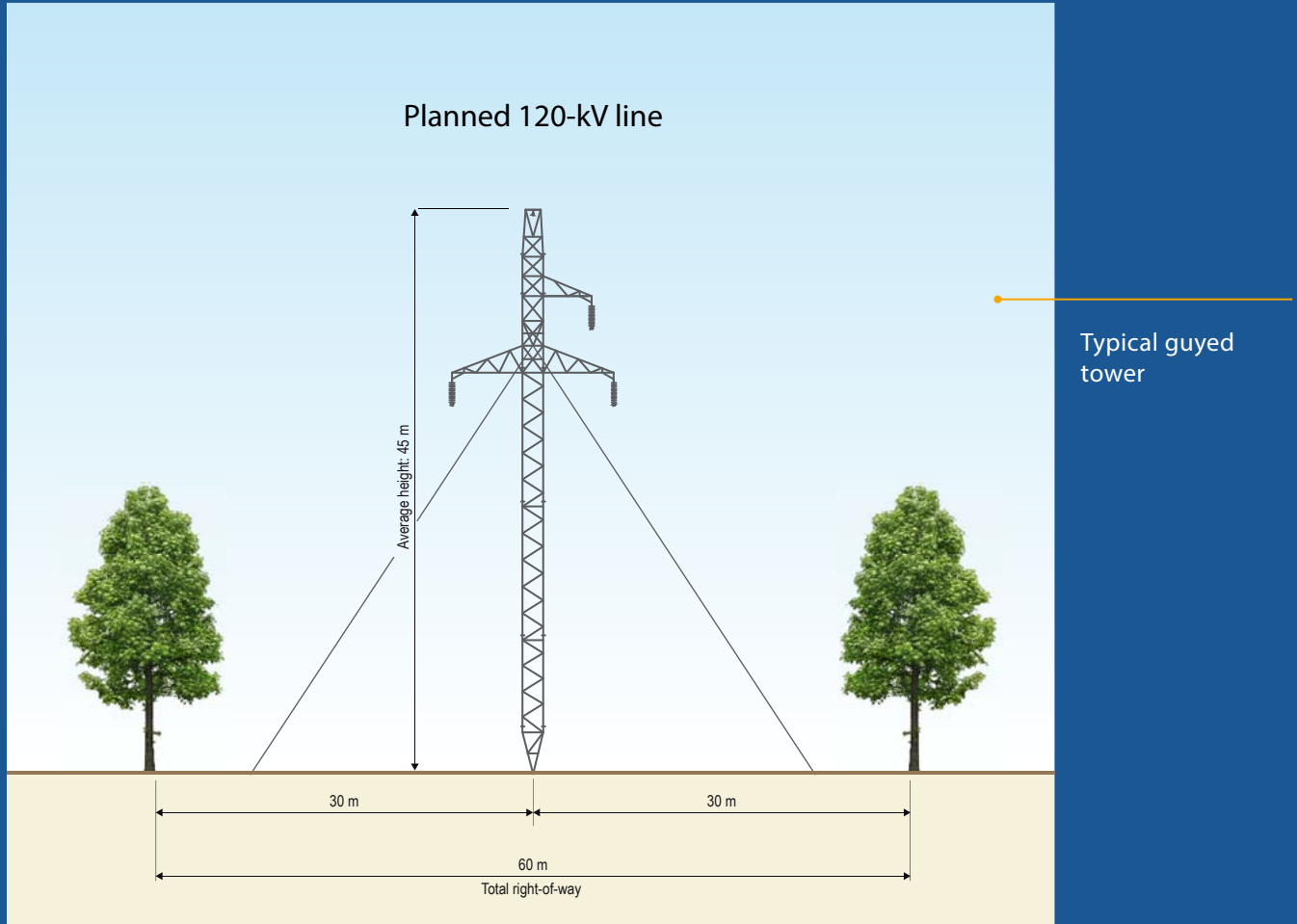
Route B runs approximately 4.7 km.

Both routes circumvent the white-tailed deer yard and cross an agroforestry area over a similar distance. The line is more visible along route A than route B in the L'Escalier reservoir, Chemin de la Savane and Chemin du Marais and Route 307 sectors.

## Towers and right-of-way

The substation's supply line will be supported by guyed steel lattice towers. They will stand at an average height of 45 m. The new right-of-way will be approximately 60 m wide.

The number of towers and their height will be determined based on the terrain and the distance between the towers.



Preliminary technical characteristics of the planned line

## Public participation

Hydro-Québec wants to ensure the integration of the substation and its supply line into the environment is as seamless as possible and invites all organizations, affected landowners and stakeholders to voice their comments and concerns before May 17, 2021.

An opinion submission form is enclosed with this bulletin. The form is also available online at <https://www.hydroquebec.com/projects/val-des-monts/>.

Hydro-Québec will consider the comments and concerns expressed by the public and stakeholders when implementing mitigation measures to best adapt the project to local realities.

## Support for community development

Hydro-Québec wants its projects to be opportunities to actively participate in the development of host communities and set up the Integrated Enhancement Program (IEP) with this in mind.

Through the IEP, Hydro-Québec grants funds based on the length of the lines and area of the planned substation to eligible organizations.

## Project schedule

**Information and public consultation**  
Spring 2021

**Information on the selected solution**  
Summer 2021

**Government authorizations**  
2022

**Construction of the substation and line**  
2023–2024

**Commissioning**  
2024

**Dismantling of La Lièvre substation**  
2024–2026

## Next steps

Hydro-Québec is currently holding information and consultation sessions to collect stakeholder comments and opinions, which it will integrate into its analysis whenever possible.

It will then determine the most advantageous line route and variant from the technical, environmental and social perspectives and share its decision with the public.

Last, it will file an environmental assessment to obtain the government approvals required to carry out the project.

## More information

Info-Project line: 1 888 465-1521, extension 6022

**Julie Léonard**

Advisor – Regional Affairs

Direction – Affaires régionales et collectivités

Email: [leonard.julie@hydroquebec.com](mailto:leonard.julie@hydroquebec.com)

<https://www.hydroquebec.com/projects/val-des-monts/>



Original text written in French.  
*Ce document est également publié en français.*