



**Transmission Line
Rights-of-Way and
Compatible Plant Species:
*So Many Possibilities***

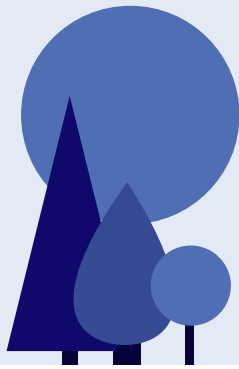


What's the purpose of power line rights-of-way?

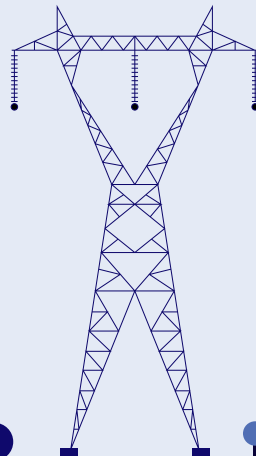
Over 34,000 kilometers of power transmission lines cross Québec, running through cleared corridors called power line rights-of-way.

These transmission lines are used to transport large quantities of electricity. The rights-of-way maintain a safe distance between power lines and surrounding vegetation, and allow access for inspection and maintenance.

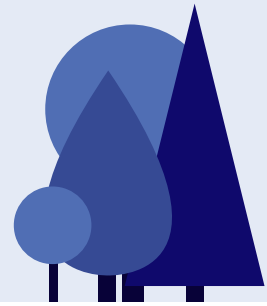
Vegetation planted in rights-of-way can serve esthetic and practical purposes. It can block the wind, act as a screen, mark boundaries or even produce edible fruit. Here are some plant species compatible with Hydro-Québec's transmission system. They are divided into four main categories: Biodiversity, Food Plant, Native Plant and Ornamental.



Outside maintained right-of-way zone (healthy trees)



Herbaceous plants, grasses and sparse shrubs reaching no more than 2.5 m at maturity



Outside maintained right-of-way zone (healthy trees)

Respect the maximum height of 2.5 metres

Do you own a piece of property bordered by a right-of-way or that a right-of-way crosses? Keep one key piece of information in mind: **2.5 metres**.

During our vegetation control work, trees and other woody plants that reach over 2.5 metres tall at maturity will be cut down for safety reasons.

Why not landscape your section of the right-of-way **how you like**, choosing plant species **that you prefer**, but that only reach 2.5 metres at maturity?

Here is a list of some deciduous and coniferous species compatible with the Hydro-Québec transmission system. Do not hesitate to consult a horticulturalist or nursery grower to discover other varieties that meet the maximum height requirements.

WWW

Before planting, consult our website to find out what you can and can't do in a power line right-of-way.

<https://www.hydroquebec.com/safety/transmission-lines/dos-and-donts.html>

Make a wise choice

Plant species and categories: Some examples

●
Biodiversity:
Benefits
wildlife



Viking Black Chokeberry
(*Aronia melanocarpa* 'Viking')



Pink Delight Butterfly Bush
(*Buddleia davidii*
'Pink Delight')



Diels' Cotoneaster
(*Cotoneaster dielsianus*)

●
Food Plant:
Tastes good



Highbush Blueberry
(*Vaccinium corymbosum*)



Beaked Hazelnut
(*Corylus cornuta*)



Japanese Quince
(*Chaenomeles japonica*)

●
Native Plant:
Benefits the
ecosystem



Northern Bush-Honeysuckle
(*Diervilla lonicera*)



Red-Osier Dogwood
(*Cornus sericea*)



Sweet Gale
(*Myrica gale*)

●
Ornamental:
Looks good



Rheingold Arborvitae
(*Thuja occidentalis*
'Rheingold')



Dwarf Arctic Willow
(*Salix purpurea* 'Nana')



Triumphans Spirea
(*Spiraea x billardii*
'Triumphans')



Compatible conifer species with a maximum height of 2.5 metres at maturity

Common Name (Scientific Name)	Zone*	Height	Width	Category	Uses**
Bird's Nest Norway Spruce (<i>Picea abies</i> 'Nidiformis')	3	1	1.5	● Ornamental	Attractive new shoots, ground cover, specimen plant
Blaauw Juniper (<i>Juniperus chinensis</i> 'Blaauw')	4a	2	1.5	● Ornamental	Mass planting, specimen plant, striking foliage
Boisbriand Arborvitae (<i>Thuja occidentalis</i> 'Boisbriand')	3a	1.5	0.8	● Ornamental	Attractive foliage, hedge, specimen plant
Brown's Yew (<i>Taxus x media</i> 'Brownii')	5	2.5	3.5	● Ornamental	Attractive foliage, mass planting, specimen plant
Canada Yew (<i>Taxus canadensis</i>)	3a	2	2.5	● Native Plant ● Ornamental	Attractive foliage, ground cover, hedge, mass planting, soil stabilization
Creeping Juniper (<i>Juniperus horizontalis</i>)	2a	0.6	2	● Native Plant	Mass planting
Dwarf Alberta Spruce (<i>Picea glauca</i> 'Conica')	4a	2	1	● Ornamental	Attractive foliage, specimen plant
Dwarf Black Spruce (<i>Picea mariana</i> 'Nana')	1a	1	1	● Ornamental	Attractive foliage, ground cover, specimen plant
Dwarf Eastern White Pine (<i>Pinus strobus</i> 'Nana')	2b	2	2	● Ornamental	Deer-resistant, specimen plant, striking foliage
Dwarf Golden Threadleaf Japanese Falsecypress (<i>Chamaecyparis pisifera</i> 'Filifera Aurea Nana')	3	1	1.5	● Ornamental	Mass planting or specimen plant, striking foliage
Dwarf Japanese Garden Juniper (<i>Juniperus procumbens</i> 'Nana')	4b	0.3	2.5	● Ornamental	Attractive foliage, ground cover
Dwarf Japanese Yew (<i>Taxus cuspidata</i> 'Nana')	4a	1	2	● Ornamental	Attractive foliage, mass planting, specimen plant
Dwarf Serbian Spruce (<i>Picea omorika</i> 'Nana')	3b	2	2	● Ornamental	Attractive foliage, mass planting
Fernspray Gold Hinoki Cypress (<i>Chamaecyparis obtusa</i> 'Fernspray Gold')	5b	2	1	● Ornamental	Striking foliage
Globe Blue Spruce (<i>Picea pungens</i> 'Glauca Globosa')	4a	1.5	1.5	● Ornamental	Specimen plant, striking foliage
Golden Globe Arborvitae (<i>Thuja occidentalis</i> 'Golden Globe')	4b	1	1	● Ornamental	Hedge, specimen plant, striking foliage
Grey Owl Juniper (<i>Juniperus virginiana</i> 'Grey Owl')	3a	1	3	● Ornamental	Attractive foliage, low mass planting
Montgomery Blue Spruce (<i>Picea pungens</i> 'Montgomery')	2b	2.5	1.5	● Biodiversity ● Ornamental	Attracts squirrels, specimen plant, striking foliage
Prostrated Common Juniper (<i>Juniperus communis</i> 'Depressa')	5b	1.5	1.5	● Ornamental	Ground cover, soil stabilization, striking foliage
Rheingold Arborvitae (<i>Thuja occidentalis</i> 'Rheingold')	4b	2	1.5	● Biodiversity ● Ornamental	Attracts birds, hedge, specimen plant, striking foliage
Romberg Park Dahurian Larch (<i>Larix gmelinii</i> 'Romberg Park')	3	1	1	● Ornamental	Autumn color
Siberian Cypress (<i>Microbiota decussata</i>)	3	0.5	2	● Ornamental	Attractive foliage, ground cover, specimen plant
Tabletop Juniper (<i>Juniperus scopulorum</i> 'Tabletop')	3	2	4	● Ornamental	Screen, striking foliage

♣ **Indigenous species:** One that grows naturally in Québec.

* **Hardiness zone:** Region in which a plant is able to grow—in other words, withstand the mean minimum temperatures in winter. The lower the number of the hardiness zone, the more cold tolerant the species is. For example, in Montréal, the hardiness zone is 6a; Québec City, 5a; Victoriaville, 4b; Saguenay, 3b; and Rouyn-Noranda, 2b.

** **Uses:** Typical features and possible uses of the plant.



Compatible deciduous species with a maximum height of 2.5 metres at maturity

Common Name (Scientific Name)	Zone*	Height	Width	Category	Uses**
Aglo Rhododendron (<i>Rhododendron 'Aglo'</i>)	4a	2.5	2.5	<ul style="list-style-type: none"> ● Biodiversity ● Ornamental 	Attracts hummingbirds, evergreen leaves, mass planting
Alpine Currant (<i>Ribes alpinum</i>)	2b	2	2	<ul style="list-style-type: none"> ● Biodiversity 	Attracts birds, mass planting
Arctic Sun Bloodtwig Dogwood (<i>Cornus sanguinea 'Arctic Sun'</i>)	4	1.5	1.2	<ul style="list-style-type: none"> ● Biodiversity ● Ornamental 	Attracts butterflies and moths, autumn color, colorful branches, hedge
Athens Carolina Allspice (<i>Calycanthus floridus 'Athens'</i>)	4a	2.5	2.5	<ul style="list-style-type: none"> ● Biodiversity 	Fragrant flowers, hedge, pollinator-friendly
✿ Beaked Hazelnut (<i>Corylus cornuta</i>)	3a	2.5	2.5	<ul style="list-style-type: none"> ● Food Plant ● Native Plant 	Edible fruit, hedge
✿ Black Chokeberry (<i>Aronia melanocarpa</i>)	4a	2	1	<ul style="list-style-type: none"> ● Biodiversity ● Food Plant ● Native Plant ● Ornamental 	Attracts birds, autumn color, edible fruit, nectar plant
Borealis Honeyberry (<i>Lonicera caerulea 'Borealis'</i>)	2	2	1	<ul style="list-style-type: none"> ● Food Plant 	Edible fruit, hedge
✿ Bracted Honeysuckle (<i>Lonicera involucrata</i>)	4b	2	1	<ul style="list-style-type: none"> ● Biodiversity ● Native Plant 	Attracts butterflies and moths, attracts hummingbirds and other birds, hedge, mass planting
✿ Broad-Leaved Meadowsweet (<i>Spiraea latifolia</i>)	2	1.5	1.5	<ul style="list-style-type: none"> ● Biodiversity ● Native Plant 	Attracts birds, deer-resistant, mass planting
Buffalo Currant (<i>Ribes aureum var. villosum</i>)	2b	2	2	<ul style="list-style-type: none"> ● Biodiversity ● Food Plant ● Ornamental 	Attracts birds, autumn color, edible fruit, fragrant flowers, mass planting, showy blossoms
✿ Canada Fly-Honeysuckle (<i>Lonicera canadensis</i>)	1	2	2.5	<ul style="list-style-type: none"> ● Biodiversity ● Native Plant 	Attracts butterflies and moths, attracts hummingbirds and other birds, deer-resistant, fragrant flowers
Coastal Sweet Pepperbush (<i>Clethra alnifolia</i>)	4	2	2	<ul style="list-style-type: none"> ● Biodiversity 	Attracts birds, attracts butterflies and moths, fragrant flowers
✿ Common Snowberry (<i>Symphoricarpos albus</i>)	2a	1.5	1.5	<ul style="list-style-type: none"> ● Biodiversity ● Native Plant 	Attracts birds, persistent fruit
Contorta Hazel-Filbert (<i>Corylus avellana 'Contorta'</i>)	5a	2	2.5	<ul style="list-style-type: none"> ● Food Plant ● Ornamental 	Edible fruit, unusual twisting branches
Diabolo Common Ninebark (<i>Physocarpus opulifolius 'Diabolo'</i>)	2b	2.5	2	<ul style="list-style-type: none"> ● Biodiversity ● Ornamental 	Attracts birds, colorful foliage, decorative bark, hedge, mass planting, prolific blooms
Diels' Cotoneaster (<i>Cotoneaster dielsianus</i>)	3a	2.5	1.5	<ul style="list-style-type: none"> ● Biodiversity ● Ornamental 	Abundant fruit, attractive shape, attracts birds, autumn color, fragrant flowers
Dwarf Arctic Willow (<i>Salix purpurea 'Nana'</i>)	2b	2	2	<ul style="list-style-type: none"> ● Ornamental 	Colorful branches, mass planting, striking foliage, trimmed hedge
Dwarf Peashrub (<i>Caragana aurantiaca</i>)	2a	2.5	0.8	<ul style="list-style-type: none"> ● Biodiversity ● Ornamental 	Attracts birds, hedge, prolific blooms
Dwarf Russian Almond (<i>Prunus tenella</i>)	2	2.5	1.5	<ul style="list-style-type: none"> ● Ornamental 	Autumn color, attracts rodents, mass planting, showy blossoms
Flowering Almond (<i>Prunus triloba var. multiplex</i>)	4	2.5	1.2	<ul style="list-style-type: none"> ● Ornamental 	Beautiful shrub when grafted, showy blossoms
✿ Flowering Raspberry (<i>Rubus odoratus</i>)	3	2.5	2.5	<ul style="list-style-type: none"> ● Biodiversity ● Food Plant ● Native Plant 	Attracts birds, edible fruit, fragrant flowers, mass planting, pollinator-friendly
✿ Fragrant Sumac (<i>Rhus aromatica</i>)	4a	2	3	<ul style="list-style-type: none"> ● Biodiversity ● Food Plant ● Native Plant ● Ornamental 	Aromatic foliage, attracts birds, autumn color, edible fruit, hedge, winter fruit
Garland Spirea (<i>Spiraea x arguta</i>)	4a	2	2	<ul style="list-style-type: none"> ● Biodiversity ● Ornamental 	Attracts birds, attracts butterflies and moths, mass planting, showy blossoms
Golden Mockorange (<i>Philadelphus coronarius 'Aureus'</i>)	3b	2	2	<ul style="list-style-type: none"> ● Biodiversity ● Ornamental 	Attracts butterflies and moths, fragrant flowers, striking foliage, trimmed hedge



Compatible deciduous species with a maximum height of 2.5 metres at maturity

Common Name (Scientific Name)	Zone*	Height	Width	Category	Uses**
Golden Plume Elder (<i>Sambucus racemosa</i> 'Plumosa Aurea')	3	2	2	● Biodiversity ● Ornamental	Attracts birds, autumn color, mass planting, striking foliage
Golden St. John's-Wort (<i>Hypericum frondosum</i>)	4b	1.5	1.5	● Biodiversity	Attracts birds, deer-resistant, mass planting, pollinator-friendly
Henry's Garnet Gooseberry (<i>Itea virginica</i> 'Henry's Garnet')	5a	1.5	2	● Biodiversity ● Ornamental	Attracts butterflies and moths, attracts hummingbirds, autumn color, mass planting
Highbush Blueberry (<i>Vaccinium corymbosum</i>)	4a	2	2	● Biodiversity ● Food Plant ● Native Plant	Attracts birds, attracts mammals, edible fruit
Holly-Leaved Barberry (<i>Mahonia aquifolium</i>)	5a	1	1	● Biodiversity ● Ornamental	Attracts birds, autumn color, evergreen foliage, mass planting, showy blossoms
Japanese Quince (<i>Chaenomeles japonica</i>)	5	2	1.5	● Food Plant ● Ornamental	Edible fruit, showy blossoms
Japanese Snowflower (<i>Deutzia gracilis</i>)	5b	1	2	● Ornamental	Fragrant flowers, hedge, prolific blooms
Jean's Gold Weigela (<i>Weigela florida</i> 'Jean's Gold')	5	1.5	1.5	● Ornamental	Mass planting, showy blossoms, striking foliage
Karenoma Japanese Pieris (<i>Pieris japonica</i> 'Karenoma')	5a	2	1.5	● Ornamental	Colorful foliage, deer-resistant, evergreen leaves, hedge, mass planting, striking twigs
Kashmir False Spirea (<i>Sorbaria tomentosa</i> var. <i>angustifolia</i>)	4a	2.5	2	● Ornamental	Mass planting, showy blossoms
Miss Kim Manchurian Lilac (<i>Syringa patula</i> 'Miss Kim')	4a	2	1.5	● Ornamental	Fragrant flowers, hedge, mass planting, showy blossoms
Mongolian Silver Spires Caragana (<i>Caragana microphylla</i> 'Mongolian Silver Spires')	3	2.5	1.5	● Biodiversity ● Ornamental	Attracts birds, autumn color, deer-resistant, hedge, striking foliage
Mount Airy Dwarf Fothergilla (<i>Fothergilla major</i> 'Mount Airy')	5b	2	1.5	● Biodiversity ● Ornamental	Attracts butterflies and moths, autumn color, fragrant flowers, hedge, mass planting, pollinator-friendly, showy blossoms
Nanking Cherry (<i>Prunus tomentosa</i>)	2b	2.5	3	● Biodiversity ● Food Plant	Attracts birds, edible fruit, fragrant flowers, mass planting, pollinator-friendly
Northern Bush-Honeysuckle (<i>Diervilla lonicera</i>)	3a	1.5	1	● Biodiversity ● Native Plant ● Ornamental	Attracts birds, autumn color, hedge, pollinator-friendly, roots help to prevent soil erosion
Northern Gold Forsythia (<i>Forsythia</i> 'Northern Gold')	3b	2	2	● Ornamental	Mass planting, showy blossoms
Northern Lights Azalea (<i>Rhododendron</i> 'Northern Lights')	3b	1.5	1.2	● Ornamental	Fragrant flowers, mass planting, showy blossoms
Northern Pearls Sawtooth Pearl Bush (<i>Exochorda serratifolia</i> 'Northern Pearls')	4b	2.5	2	● Ornamental	Hedge, showy blossoms
Odessa Tamarisk (<i>Tamarix ramosissima</i>)	4b	2.5	2	● Ornamental	Hedge, mass planting, showy blossoms, striking foliage
Onondaga Sargent Viburnum (<i>Viburnum sargentii</i> 'Onondaga')	4a	2.5	2.5	● Biodiversity ● Ornamental	Attracts birds, attracts butterflies and moths, mass planting, showy blossoms
Palibin Lilac (<i>Syringa meyeri</i> 'Palibin')	3	2	2	● Biodiversity ● Ornamental	Attracts butterflies and moths, fragrant flowers, hedge, mass planting
Panicle Hydrangea (<i>Hydrangea paniculata</i> 'Grandiflora')	3b	2.5	2.5	● Ornamental	Cut flowers, late flowering, mass planting
Pink Delight Butterfly Bush (<i>Buddleia davidii</i> 'Pink Delight')	5b	2	2.5	● Biodiversity	Attracts butterflies and moths, attracts hummingbirds, fragrant flowers, nectar plant
Pink Princess Weigela (<i>Weigela</i> 'Pink Princess')	4	2	2	● Biodiversity ● Ornamental	Attracts hummingbirds, mass planting, striking foliage
Pleniflora Japanese Rose (<i>Kerria japonica</i> 'Pleniflora')	4	2	2	● Ornamental	Colorful branches, mass planting, showy blossoms



Compatible deciduous species with a maximum height of 2.5 metres at maturity

	Common Name (Scientific Name)	Zone*	Height	Width	Category	Uses**
	Purpleleaf Sand Cherry (<i>Prunus x cistena</i>)	3	2.5	1.5	● Ornamental	Fragrant flowers, mass planting, striking foliage
✿	Red Chokeberry (<i>Aronia arbutifolia</i>)	4a	2.5	1.5	● Biodiversity ● Food Plant ● Native Plant ● Ornamental	Attracts birds, autumn color, edible fruit, nectar plant
	Red Dragon Cutleaf Japanese Maple (<i>Acer palmatum</i> var. <i>dissectum</i> 'Red Dragon')	5	2	2	● Ornamental	Striking foliage
✿	Red-Osier Dogwood (<i>Cornus sericea</i>)	2a	2	3	● Biodiversity ● Native Plant ● Ornamental	Attracts birds, colorful branches
	Regent Saskatoon Serviceberry (<i>Amelanchier alnifolia</i> 'Regent')	2	1.8	1.8	● Biodiversity ● Food Plant	Attracts birds, attracts butterflies and moths, edible fruit, fragrant flowers, hedge
✿	Round-Leaved Dogwood (<i>Cornus rugosa</i>)	3a	1.5	2	● Biodiversity ● Native Plant	Attracts birds, attracts butterflies and moths, hedge
	Rubra February Daphne (<i>Daphne mezereum</i> 'Rubra')	3a	1.5	1.5	● Ornamental	Early flowering, fragrant flowers, prolific blooms
	Rubra Grandiflora Flowering Quince (<i>Chaenomeles speciosa</i> 'Rubra Grandiflora')	5b	2	1	● Food Plant ● Ornamental	Edible fruit, showy blossoms
	Shrubby Cinquefoil (<i>Potentilla fruticosa</i>)	2a	1.3	1.3	● Biodiversity	Attracts butterflies and moths, hedge, mass planting
	Silver and Gold Dogwood (<i>Cornus sericea</i> 'Silver and Gold')	3	2	2.5	● Ornamental	Colorful branches, hedge, striking foliage
✿	Smooth Rose (<i>Rosa blanda</i>)	2b	2	2	● Biodiversity ● Food Plant ● Native Plant ● Ornamental	Attracts butterflies and moths, edible fruit and petals, pollinator-friendly, showy blossoms
✿	Soapberry (<i>Shepherdia canadensis</i>)	2a	2	2	● Biodiversity ● Native Plant	Attracts birds, mass planting, nitrogen-fixing
	Superba Flowering Quince (<i>Chaenomeles x superba</i>)	5b	1.2	1.5	● Food Plant ● Ornamental	Edible fruit, showy blossoms
✿	Sweet Gale (<i>Myrica gale</i>)	2	2	2	● Native Plant ● Ornamental	Autumn color, fragrant foliage, nitrogen-fixing
	Tatarian Dogwood (<i>Cornus alba</i>)	2a	2.5	2	● Biodiversity ● Ornamental	Attracts birds, colorful branches, hedge
	Triumphans Spirea (<i>Spiraea x billardii</i> 'Triumphans')	2b	2	1.5	● Biodiversity ● Ornamental	Attracts birds, mass planting, showy blossoms
	Trost Dwarf Birch (<i>Betula pendula</i> 'Trost Dwarf')	3b	1	1.5	● Ornamental	Striking foliage
	Vanhoutte Spirea (<i>Spiraea x vanhouttei</i>)	3	2.5	2	● Ornamental	Mass planting, showy blossoms
	Viking Black Chokeberry (<i>Aronia melanocarpa</i> 'Viking')	4a	2	1	● Biodiversity ● Food Plant ● Ornamental	Attracts birds, autumn color, edible fruit, hedge, nectar plant, windbreak
	Western Sandcherry (<i>Prunus pumila</i> var. <i>besseyi</i>)	3a	2.5	1.5	● Biodiversity ● Food Plant ● Ornamental	Attracts birds, edible fruit, showy blossoms, striking foliage
	Wild Hydrangea (<i>Hydrangea arborescens</i>)	3a	1.5	1.5	● Biodiversity ● Ornamental	Mass planting, pollinator-friendly, showy blossoms
	Young Lady Smokebush (<i>Cotinus coggygria</i> 'Young Lady')	4b	2.5	2.5	● Ornamental	Autumn color, showy blossoms

Maintain a safe distance

Because they carry large quantities of electricity at a very high voltage, transmission lines are not covered by an insulating sheath. The air around them provides insulation. Therefore, it's important that nothing come close enough to the lines to cause an electric arc. An arc can start a fire and cause a serious outage. At the voltages used for power transmission, a tree doesn't need to even touch the line to create an electric arc.

A right-of-way prevents accidents by making sure that vegetation does not come too close to the lines. In fact, the higher the voltage of the line, the greater the clearance required to insulate it.

